

ANTHROPOLOGICAL RECORDS

13:5

**TRIBES OF VITI LEVU AND THEIR
ORIGIN PLACES**

BY

E. W. GIFFORD

UNIVERSITY OF CALIFORNIA PRESS

BERKELEY AND LOS ANGELES

1952

TRIBES OF VITI LEVU AND THEIR ORIGIN PLACES

BY

E. W. GIFFORD

ANTHROPOLOGICAL RECORDS

Vol. 13, No. 5

ANTHROPOLOGICAL RECORDS

EDITORS: E. W. Gifford, R. F. Heizer, J. H. Rowe

Volume 13, No. 5, pp. 337 - 376, plates 30-31

Submitted by editors May 8, 1951

Issued February 3, 1952

Price, 50 cents

UNIVERSITY OF CALIFORNIA PRESS
BERKELEY AND LOS ANGELES
CALIFORNIA

CAMBRIDGE UNIVERSITY PRESS
LONDON, ENGLAND

PRINTED IN THE UNITED STATES OF AMERICA

PREFATORY NOTE

This paper is the fourth by the author based on material obtained during the University of California archaeological expedition to Fiji in 1947. This expedition was generously financed by the Viking Fund, Inc.

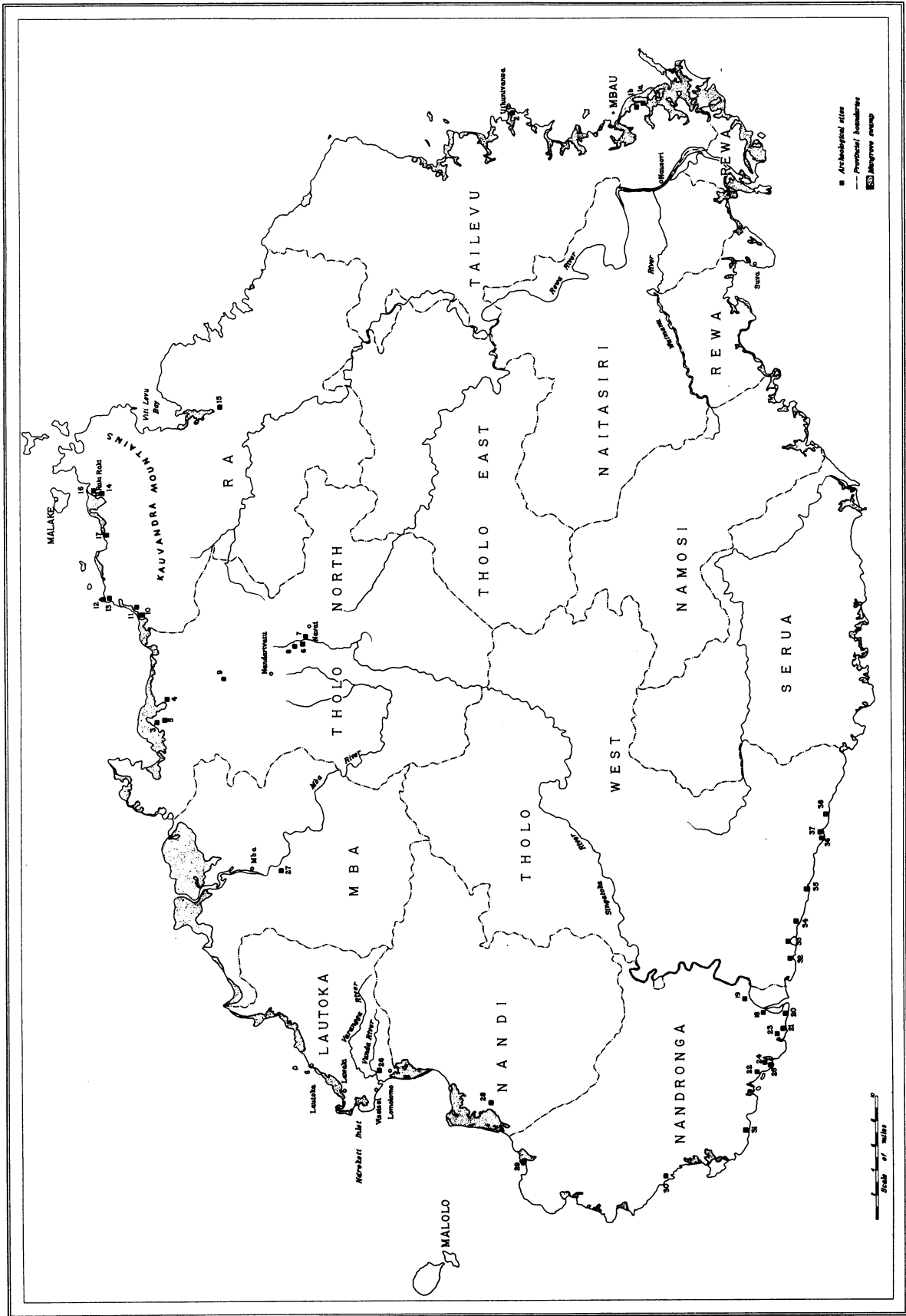
I am indebted to Dr. Lindsay Verrier, Departmental Statistics and Demography Branch, Southern District Medical Office, Nausori, Fiji, for 1946 census figures on the Fijian population of Viti Levu and nearby smaller islands. On Viti Levu proper the Fijians numbered 64,681, on the small satellite islands 6,004. This paper is little concerned with the latter.

CONTENTS

	Page
Prefatory note	iii
Introduction	337
Tribes without recorded origin places	338
Tribes from Polynesia	339
Tribes from the Kuvandra Mountains	340
Tribes from origin places other than Kuvandra	346
Origin places with more than two tribes	346
Origin places with two tribes	349
Origin places with single tribe	352
Sources of tribal names	370
Literature cited	371
Plates	373

MAP

Viti Levu Island, Fiji, showing provincial boundaries . . . facing	1
--	---



Viti Levu Island, Fiji, Showing Provincial Boundaries

TRIBES OF VITI LEVU AND THEIR ORIGIN PLACES

BY
E. W. GIFFORD

The archaeologist in Viti Levu has an advantage over his colleagues in California and most parts of the New World, since nearly all the sites he works on are named and known to the Fijians. Those so named are former places of residence of the "tribes" (yavusa) of the island, and are generally referred to as koro makawa, "old village." Of especial importance are those sites called yavutu, a term denoting an original site. However, yavutu is also sometimes applied to an area or region, as, for example, the Kouvandra Mountains, which many tribes name as their traditional origin place. Then the term is of no special service to the archaeologist in locating an ancient site. On the other hand, when the yavutu is a specific ancient site, as for example, Naisongöliku (at site 17)¹ or Vunda (site 26), the archaeologist is directed to cultural deposits of great value for an understanding of the prehistory of Viti Levu.

In order to facilitate my examination of Viti Levu archaeological sites in 1947, Ratu Sir Lala Sukuna supplied me with a list of the numerous yavusa of Viti Levu together with their yavutu, so far as recorded. These data, extracted from the many volumes of testimony assembled by the Native Lands Commission since 1905, are published herewith, and should be useful to the ethnologist and the physical anthropologist, as well as to the archaeologist, to say nothing of their intrinsic value as a record of Fijian social and political organization.

Some tribes are now scattered among different villages, less frequently in different districts, and rarely in different provinces. Nevertheless, it should be remembered that districts and provinces are modern administrative divisions; thus the fact that a tribe overlaps boundaries is not too significant. The story of the movements of each tribe would be a record of the involved and tangled skein of events, especially during the last century and a half, when the growing power of the rival kingdoms of Mbau and Rewa caused many shifts of population. Local hostilities seem also to have been prevalent, apart from the growth of the two kingdoms. These events cannot be considered in the present connection, but obviously the records of the Native Lands Commission are a mine of information, which it is to be hoped will be adequately studied by anthropologists some day. Capell and Lester have made excellent but limited use of this source material in their paper on "Local Divisions and Movements in Fiji."²

Whether the word "yavusa" is to be translated precisely as "tribe" has been discussed by various writers. Laura Thompson translates it as "phratry,"³ since a yavusa embodies a group of named patrilineal "clans" (matanggali or, in official Fijian orthography, mataqali), and these in turn embody named patrilineal subclans (itokatoka). Dorothy M. Spencer translates "yavusa"

as "tribe."⁴ Capell and Lester give a full discussion of the yavusa and its subdivisions and point out its local variations,⁵ presenting the organization and history of the yavusa Nambukembuke⁶ as an example for Viti Levu. This yavusa embraces nine "clans," which in turn include twenty-seven subclans. Like the clans and subclans the yavusa is patrilineal.

Mr. G. Kingsley Roth supplied the following information concerning the recording of information by the Native Lands Commission. Provision was made in the Native Lands Ordinance of 1905 for the establishment of the Native Lands Commission, and the section of the law relating to it runs as follows:

The Governor shall appoint a Native Lands Commission consisting of one or more Commissioners, each of whom shall have the powers of the Commission, who shall be charged with the duty of ascertaining what lands in each province of the Colony are the rightful and hereditary property of native owners, whether of mataqalis or in whatever manner or way or by whatever divisions or subdivisions of the people the same may be held.

It was as a result of that Commission's work over the years that Ratu Sir Lala Sukuna was able to produce for me the lists printed below. Ratu Sukuna is the only member left of the original Native Lands Commission. In 1947 he delegated the compilation of the lists for me to Setareki M. Koto, M.B.E., the only member of the staff of the original Commission now left.

Of the total of more than six hundred yavusa recorded for the island of Viti Levu and small adjacent islands, such as Mbau, Malake, Serua, Yanutha, etc., there are only about seventy-five which have no recorded yavutu. In the body of this paper I shall use the word yavusa for "tribe" and yavutu for "origin place," retaining "tribe" and "origin place" in the chapter headings only.

One phenomenon, very apparent from the data presented in this paper, is the considerable amount of movement from place to place. Few yavusa now live at their yavutu. Some yavusa have left their yavutu and others have moved in. Tiny, but famous, Mbau Island, twenty-one acres in area, is an excellent example of this. See plate 30 for an air view of the island.

The yavusa Vakali is the only one claiming Mbau Island as its yavutu, but this yavusa now lives on the mainland in the villages of Vakali and Vandrai in Nakelo District, Tailevu Province. After leaving Mbau Island and before settling in the present villages, the Vakali lived at Narukura and Kamba, Mbau District, Tailevu Province. There are now on Mbau Island three yavusa,

¹The numbered sites are described in Gifford, 1951a.

²A. Capell and R. H. Lester, 1941.

³Laura Thompson, 1940, p. 32.

⁴Dorothy M. Spencer, 1941, p. 5. Miss Spencer worked in Namataku District, Tholo West Province.

⁵Capell and Lester, pp. 314-323.

⁶Ibid., pp. 330-335.

Kumbuna (yavutu in Nayavu District, Tailevu Province),⁷ Tunindau (yavutu in the Kavandra Mountains, Ra Province), and Nambou (yavutu Lasakau, at the foot of the Kavandra Range, Ra Province). The Tunindau

people reside in the part of Mbau Island called Soso, the Nambou people in the part called Lasakau. Yet another yavusa, the Vusanamu of Tongan origin, lived for a time on Mbau Island before settling in Rewa Province.

TRIBES WITHOUT RECORDED ORIGIN PLACES

Yavusa without recorded origin places are largely in the southwestern half of Viti Levu. Tholo West Province contains the largest number; Nandronga Province stands second. Other provinces with a scattering few are Nandi, Mba, and Tailevu. In the last there is but a single yavusa. It is of late origin, being composed of increments from two other yavusa.

It is an interesting question whether yavusa without yavutu have merely forgotten their origin places and represent an early stratum of population, or whether these yavusa were never interested in such traditional matters. These tribes certainly are in marked contrast⁸ to the overwhelming majority of Viti Levu tribes which

do claim yavutu. Another possibility is that the claim to a yavutu is a pattern which, developed by one group of yavusa (for instance, those that claim to be of Kavandra origin), spread to others in somewhat the manner that fictitious genealogies are developed by or for the rulers of Negro tribes in Africa which have been Mohammedanized. That this has probably happened is suggested by certain tribes which, though claiming Kavandra origin, are of different speech from most Kavandra tribes, for example, those in the Kavandra list (pp. 342-345) with names prefixed by *lewei*, *noi*, and *kai*, all meaning "people of."⁹

YAVUSA WITHOUT RECORDED YAVUTU

Yavusa	Village	District	Province
Emalu	Nakoro	Noikoro	Tholo West
	Nanduta	Noikoro	Tholo West
Kavindi	Nukuilau	Noikoro	Tholo West
Keasuna	Yavulo	Nasingatoka	Nandronga
Keasungananggali. . .	Mbalenambelo	Koroinasau	Tholo West
Ketenavunivalu	Emuri	Tuva	Nandronga
	Naimbulukau	Mbulu	Mba
Ketenatukani	Koroisangana	Nanggalimare	Tholo West
Keyasi	Tawaleka	Namataku	Tholo West
	Wala	Namataku	Tholo West
Keyasungananggali. . .	Volinangerua	Mbemana	Tholo West
Koroivangandra	Nawau	Momi	Nandronga
	Tau	Wai	Nandronga
Koronikula	Yandua	Thuvu	Nandronga
Korowaiwai	Nasivikoso	Mangondro	Tholo West
Kumbunithere	Mbalenambelo	Koroinasau	Tholo West
	Namanda	Korolevuiwai	Tholo West
	Vatukarasa	Korolevuiwai	Tholo West
Leweikoromani	Tau	Wai	Nandronga
Leweilomo	Nambila	Momi	Nandronga
Lewinakurasinga	Lomawai	Wai	Nandronga
Leweinasoni	Navisambasamba	Malomalo	Nandronga
Leweitoko	Nausori	Namataku	Tholo West
Leweivaranga	Yako	Momi	Nandronga
Leweivunaniu	Yako	Momi	Nandronga
Mataono	Ndraimba	Mangondro	Tholo West
	Nandevo	Mangondro	Tholo West
Matatini	Nasauthoko	Namataku	Tholo West
Mataviavia	Semo	Tuva	Nandronga
Mbolambola ¹⁰	Nalembalemba	Mbemana	Tholo West
Mota	Nukuilau	Noikoro	Tholo West
	Nakoro	Noikoro	Tholo West
Nakaria	Yako	Momi	Nandronga
Nakumbulevu	Nandrala	Thonua	Tholo West
Nalangi	Nandrala	Thonua	Tholo West
Nalolo	Kumbuna	Wai	Nandronga
	Lomawai	Wai	Nandronga
Namalo	Mbukuya	Mangondro	Tholo West
	Natambunguto	Mangondro	Tholo West
Nambau	Naviyango	Namataku	Tholo West
Namboka	Korotongo	Thonua	Tholo West
	Vatukarasa	Thonua	Tholo West
Nambua ¹¹	Oveya	Mbau	Tailevu

⁷See Derrick, 1946, p. 54, n. 4, for still earlier details about the Kumbuna people, whom he describes as "the chiefly yavusa of Bau."

⁸Cf. Capell and Lester, p. 318.

⁹Ibid., p. 320.

¹⁰Mentioned, *ibid.*, p. 319.

¹¹Composed of parts of the yavusa Nalewandina and Tonga of Namara District, Tailevu Province, and presumably of late origin.

YAVUSA WITHOUT RECORDED YAVUTU (cont.)

Yavusa	Village	District	Province
Nambua ¹²	Mavua	Mavua	Tholo West
Nambure	Nandrala	Thonua	Tholo West
Namuka	Voua	Tuva	Nandronga
Nandrukumboto	Laselase	Nasingatoka	Nandronga
Nanggeleusa	Nandrungu	Naloto	Nandronga
Nanuku	Yavuni	Vaturu	Nandi
Naroyasi	Mbukuya	Magondro	Tholo West
	Nasivikoso	Mangondro	Tholo West
Nasatongo	Rukurukulevu	Thuvu	Nandronga
Nasau	Semo	Tuva	Nandronga
Nasikawa	Numbutolu	Nasikawa	Tholo West
Natavathake	Vatunaremba	Vaturu	Nandi
Natavaya	Tonga	Nanggalimare	Tholo West
Navakoro	Matokana	Noikoro	Tholo West
	Nakoro	Noikoro	Tholo West
Navuke	Natawa	Vaturu	Nandi
Navunuma	Nangusutambu	Koroinasau	Tholo West
Nayambe	Nandevu	Mangondro	Tholo West
	Ndraimba	Mangondro	Tholo West
Ndrusau	Naviyango	Namataku	Tholo West
Ndukusuna	Rukurukulevu	Thuvu	Nandronga
Noi Kuata	Nakalavo	Nokonoko	Nandronga
Noi Lau	Naindiri	Malomalo	Nandronga
Noi Mandundu	Nayawa	Nasingatoka	Nandronga
Noi Nambua	Koronisangana	Nanggalimare	Tholo West
	Tonga	Nanggalimare	Tholo West
	Vunanggoru	Nanggalimare	Tholo West
Noi Thambe	Votua	Korolevuiwai	Tholo West
Noi Tonga ¹³	Nawamangi	Thonua	Tholo West
Noi Toruku	Navutu	Wai	Nandronga
Noi Tumbai	Tangange	Korolevuiwai	Tholo West
	Yavuni	Vaturu	Nandi
Noi Wai	Tawaleka	Namataku	Tholo West
Noi Werendrunga	Narata	Thonua	Tholo West
Nuku	Naevuevu	Thuvu	Nandronga
Nukuvura	Ndraimba	Namataku	Tholo West
	Wala	Namataku	Tholo West
Rewasali	Nasauthoko	Namataku	Tholo West
Ruailevu	Korovou	Nasikawa	Tholo West
	Wala	Nasikawa	Tholo West
Ruwailevu	Tawaleka	Namataku	Tholo West
Seniuthi	Nggerenggere	Nokonoko	Nandronga
Talatala	Yavuni	Vaturu	Nandi
Tiolovo	Natunuku	Mbulu	Mba
Tumbeinonggi ¹⁴	Raiwangga	Mavua	Tholo West
Tumbeitarewa	Nambau	Tuva	Nandronga
Vasuikoro	Nasauthoko	Namataku	Tholo West
Vunambaka	Vunatovau	Nokonoko	Nandronga
Vunandakua	Mbukuya	Mangondro	Tholo West
	Natambunguto	Mangondro	Tholo West
Yavusatina	Tonge	Naloto	Nandronga

TRIBES FROM POLYNESIA

It is frequently observed that the tallness of coastal dwellers in Viti Levu is probably due to Polynesian admixture, but Polynesian origin is claimed by only three yavusa, one in Tholo West Province and two in Rewa Province. These three claim Tongan origin; none claims Samoan or other Polynesian ancestry. However, Mbauan "s" is cognate with Samoan "s," and the "h" of southwestern Viti Levu is cognate with Tongan "h." My limited evidence of only three yavusa of Polynesian

origin, and these from Tonga, does not gainsay the possibility that others of Polynesian origin have been forgotten; nor does it gainsay the absorption of castaways into the population without their being indicated by a yavusa name. This last circumstance would apply particularly to women castaways or immigrants, since the yavusa of Viti Levu are patrilinear.

Two yavusa in Rewa Province named places in the kingdom of Tonga as the location of their yavutu.

¹²For details of organization see Capell and Lester, p. 319.

¹³See Gifford, 1951a, site 32 (Mbulu), pp. 253-254.

¹⁴See Capell and Lester, pp. 320, 321, for mention of this yavusa and for diagram of Raiwangga village.

Yavusa Nailarumbe; yavutu Mua, Tongatapu Island, Tonga. Now lives in Nasingatoka Village, District of Rewa, Province of Rewa. Before settling in Rewa this yavusa lived at Tavuki, Kandavu Island.

Yavusa Vusanamu; yavutu Kolomotua, Tongatapu Island, Tonga. Now lives in Nambua Village, District of Rewa, Province of Rewa. Before settling in Rewa this yavusa lived on Mbau Island, Tailevu Province.

In addition to the two yavusa in Rewa Province claiming yavutu in Tongatapu Island, a third yavusa, the Noi Tonga of Tholo West Province has already been recorded under the caption "Tribes without Recorded Origin Places." Noi Tonga is the only one naming a

definite individual as ancestor, namely, Finau Maile Latumai, apparently a political refugee of about 1800.¹⁵

In Rewa Province there is a district of Tonga and an island of Tonga, where now live three yavusa (Vuthi, Nakorolevu, and Navokai), whose yavutu are on the same island. Whether these claim ultimate descent from the kingdom of Tonga was not learned. The yavutu of the first two is Nakorolevu; of the third Nanggavoka. In addition, yavusa Tonga from yavutu Tonga lives in Naroko district, Ra Province, but the location of the yavutu was not learned, except that it may be the place called Tonga, near site 14 (Namotutu)¹⁶ rather than the Kingdom of Tonga. Another tribe named Tonga claims the Kauvandra Mountains as yavutu. Capell and Lester¹⁷ assume that other Polynesians besides Tongans settled in Fiji.

TRIBES FROM THE KAUVANDRA MOUNTAINS

Yavusa claiming Nakauvandra (the Kauvandra Mountains), Ra Province, as their origin place total seventy-nine. (Those in two provinces have been counted twice.) From the standpoint of myth and legend these would be the yavusa dispersed from that mountain range after the war and the rise of dialectic difference mentioned in the origin tale.¹⁸

The yavusa of Kauvandra origin are now living in six of the modern provinces, with the heaviest concentration (44 tribes) in Tailevu Province, eastern Viti Levu. Nandi Province in the west has 20, Serua Province 9, Tholo West Province 3, Rewa Province 2, and Lautoka Province 1. The two Rewa yavusa are the only ones to name definite places in the Kauvandra Mountains as yavutu, namely Matanikoro and Narau-yamba. It is of special interest that none of the modern yavusa of Ra Province claim Kauvandra as their yavutu. Instead they name various specific localities as yavutu, certain of them being at archaeological site 17. To the Ra tribes the Kauvandra Range is a holy and fearsome region, residence of the god Ndengei, who lives there in snake form. Part of the pathway of the dead also lies along this mountain range.

It is to be doubted that seventy-nine yavusa came from the Kauvandra Mountains, which occupy a relatively small portion of the surface of Viti Levu. The precipitous character of the range makes it unlikely that it ever held much of a population. The explanation of the attribution to a Kauvandra origin lies, I believe, in the prestige attaching to such an origin, since the important deified ancestor Ndengei is supposed to reside in that range.¹⁹

However, another possible explanation is that not the tribe themselves but only single tribal ancestors came from that region. I know of only one example of this, however: the yavusa Nambukembuke, which claims an origin place of the same name, apparently in Tholo East Province. This happens to be the sample yavusa selected for Viti Levu by Capell and Lester to exemplify yavusa history. The account they translated from the Native Lands Commission records states that the ancestor (vu) alone came from the Kauvandra Mountains²⁰ and, after marrying, founded a village at Nambukembuke which became the tribal origin place (yavutu). I have listed Nambukembuke in the section "Origin Places with Single Tribe."

When the provincial distribution of the Kauvandra

yavusa is compared with the distribution of those without recorded yavutu, the two groups are found to be largely mutually exclusive in distribution, a fact that is no doubt of historical significance. (In the following list yavusa living in two provinces have been counted twice.)

Provinces	Number of Yavusa of Kauvandra Origin	Number of Yavusa without Recorded Yavutu
Tailevu	44	1
Nandi	20	5
Serua	9	0
Tholo West	3	40
Rewa	2	0
Lautoka	1	0
Nandrunga	0	28
Mba	0	2
Ra	0	0
Naitasiri	0	0
Namosi	0	0
Tholo East	0	0
Tholo North	0	0

From the map it will be observed that the Kauvandra yavusa occupy provinces to the southeast, south, and west of that mountain range, which lies in Ra Province. The absence of Kauvandra yavusa from several modern provinces is doubtless of historical significance. None is reported for Ra Province, in which the mountain range lies, nor for other extensive provinces: Naitasiri, Nandrunga, Tholo East, Tholo North, and Mba. The scanty number reported in the provinces of Tholo West, Rewa, and Lautoka ranks these provinces as unimportant in the distribution of Kauvandra yavusa. The relatively large number in Nandi Province in the far west is difficult to understand.

My theoretical interpretation of the distribution of these two categories of yavusa is that they are of different strata of population. The Kauvandra yavusa are probably a late stratum that stems from the legendary second Ndengei immigration of about 1600. I am convinced that these immigrants were Melanesians, not Polynesians as Brewster surmises.²¹

Yavusa without yavutu are, I think, mostly early Melanesians and in small part late-arriving Polynesians, probably specifically Tongans. The Melanesians

¹⁵Gifford, 1951a, site 32 (Mbulu), pp. 253-254.

¹⁶Ibid., p. 248.

¹⁷Capell and Lester, p. 48.

¹⁸Gifford, 1951b, p. 173. Apparently Biblical influence.

¹⁹Brewster, 1922, p. 269.

²⁰Capell and Lester, p. 331.

²¹Gifford, 1951b, p. 176; Brewster, pp. 255, 258.

would represent an early pre-Kauvandra stratum of population and the Polynesians a minor post-Kauvandra stratum. The yavusa Noi Tonga, of Tholo West Province, claiming no yavutu, nevertheless traced its ancestry to a Tongan named Finau Maile Latumai, who probably arrived about 1800.²² (Two other yavusa, of Rewa Province, claiming yavutu in the kingdom of Tonga, have been discussed under the heading "Tribes from Polynesia.") Moreover, in Nandronga and parts of Tholo West, Tongan "h" replaces official Mbauan "s" in local dialects. The name of site 36, Namahara, is an example.²³

The yavusa claiming Kauvandra as their yavutu illustrate the geographic origin of many Fijian yavusa names.

²²For details see Gifford, 1951a, p. 254.

²³Ibid., p. 255.

Forty are named for the old village or first place of settlement after leaving the legendra yavutu. Many of the settlements made after leaving Kauvandra cannot be located on the 1939 map, since they have been abandoned. It is probably significant of legendary rather than real origin that no yavusa of Kauvandra origin employs that name as its yavusa name. Many yavusa of other origin are named for their yavutu, as will be apparent from the lists given in sections beyond.

In the lists which follow I shall employ the designation "old village" for the settlements occupied after leaving the yavutu but before moving to the present village. In some few cases the move was from the yavutu to the present village. In still rarer instances a yavusa may still reside at its yavutu.

ANTHROPOLOGICAL RECORDS

YAVUSA FROM THE KAUVANDRA MOUNTAINS

Yavusa	Old Village	Present Village	District	Province
Kai Loa	Nganganamoli, near Korovuto	Sikituru	Sikitutu	Nandi
Kambatia	Kambatia, Uluitova	Sawa	Verata	Tailevu
Koromba	Koromba	Yavuna	Nawaka	Nandi
Koronikalou . .	Thautata	Thautata	Mbau	Tailevu
Korovau	Koroimbure, near Koromba	Tumbeinasolo	Nawaka	Nandi
Leweinanggali .	Nanggara at Narararua	Namulomulo	Nawaka	Nandi
Leweivulani . .	Vunaniu, Yavusania	Yavusania	Sikituru	Nandi
Matanikoro . . .	Kumbuna, Nayavu Dist., Tailevu Prov.	Nukui	Rewa	Rewa
	Kumbuna to Navaka, Notho Dist., Rewa Prov.	Visinu	Notho	Rewa
Mathoi	Mathoi	Namburenivalu	Namena	Tailevu
	Namena Dist.	Uthunivanua	Verata	Tailevu
Mbatiki	Mbatiki Id., op- posite Nanduru- loulou	Nakalawatha	Namara	Tailevu
Mbau	Mbau, Wailotua	Nakorovou	Namalata	Tailevu
	(the same)	Navunisoile	Namalata	Tailevu
Mbemanu	Nawaka	Nawaka	Nawaka	Nandi
Mbolambola . .	Vatukinimai, Mbolambola	Yavuna	Nawaka	Nandi
Muana	Nataveya, Nuku Dist.	Natongandravu	Nuku	Tailevu
Nailavutu	Emua, between Yako and Koro- vuto	Yavusania	Sikituru	Nandi
Naithula	Naithula	Nggelekuro	Namena	Tailevu
Naivakathere . .	Nailenga near Nambaitavo	Vatukarasa	Taivungalei	Tailevu
Nakamakama . .	Vunimbini, Rewa	Ndorokavu	Rewa	Rewa
Nakorolevu . . .		Waithoka	Mbau	Tailevu
Nakukuthoko . .	Nakukuthoko, Navotua Ridge	Naitutu	Namalata	Tailevu
	(the same)	Veinungga	Namalata	Tailevu

YAVUSA FROM THE KAUVANDRA MOUNTAINS (cont.)

Yavusa	Old Village	Present Village	District	Province
Nakukuthoko	(the same)	Nakalawatha	Namalata	Tailevu
Naloto	Naloto, Nasautoka Dist., Tholo East Prov.	Nevithovatu	Naloto	Tailevu
Namboutini . . .	Namboutini	Ndakuinuku	Sawakasa	Tailevu
Namoa	Namoa	Nasau	Naloto	Tailevu
Nandakua	Nandakua	Malambi	Wailevu	Tailevu
Nandruku	Nandruku, Noikoro Dist., Tholo West Prov.	Korovisilou	Serua	Serua
Nanggele	Nanggele	Nggelekuro	Namena	Tailevu
Naovini	Naovini	Londoni	Sawakasa	Tailevu
Nasau	Nasau	Matathula	Namalata	Tailevu
	(the same)	Nakalawatha	Namalata	Tailevu
Nasaunivalu . .	Korovutia	Sikituru	Sikituru	Nandi
Nasaunivalu . .		Keyasi	Namataku	Tholo West
Nasautoka . . .	Nasautoka	Vuna	Wailevu	Tailevu
Nasevaravara .	Vatukinimai on Koromba Hill	Yavuna	Nawaka	Nandi
Nasoroiwatha .	Nasoroiwatha, Navosa	Wainimatanga	Nuku	Serua
Nathulava	Nathulava, near Mbalenambelo, Koroinasau Dist., Tholo West Prov.	Namanggu-manggua	Serua	Serua
		Tangange	Korolevuiwai	Tholo West
Natongandravu	Wailase, Nausori, Naselai	Natongandravu	Nuku	Tailevu
Nautondua . . .		Kamba	Mbau	Tailevu
Navalavungga .	Navalavungga	Nasaimbitu	Nayavu	Tailevu
Navitilevi	Koroisuthundua, Wailotua	Veinungga	Namalata	Tailevu
Navo	Navo	Vunayasi	Nandi	Nandi
Nawaimbuta . . (Nasau)	Nawaimbuta	Nailenga	Namalata	Tailevu
	(the same)	Navunisolé	Namalata	Tailevu
Nawaindina . . .	Nawaindina	Matathula	Namalata	Tailevu
Nawaka	Nawaka	Nawaka	Nawaka	Nandi
Ndavetalevu . .		Vatoa	Mbau	Tailevu

ANTHROPOLOGICAL RECORDS

YAVUSA FROM THE KAUVANDRA MOUNTAINS (cont.)

Yavusa	Old Village	Present Village	District	Province
Ndaviko	Ndaviko	Veinungga	Namalata	Tailevu
	(the same)	Navunimono	Verata	Tailevu
Ndere	Ndere	Namburenivalu	Namena	Tailevu
	(the same)	Lawaki	Namena	Tailevu
	"Separated at Nanggatava"	Nggelekuro	Namena	Tailevu
Ndeumba	Mbureta, Ova- lau Id., to Rewa to Ndeumba	Savaniviuto	Ndeumba	Serua
Ndravuni	Wainivalau, Waindina, Naitasiri	Sandro	Ndeumba	Serua
	(the same)	Savaniuto	Ndeumba	Serua
Nggelema	Nggelema	Nasaimbitu	Nayavu	Tailevu
Noi Korolevu	Korolevu near Noikoro	Vunimbau	Ndeumba	Serua
Noi Korotongo	Nawangganda- mu	Vatutu	Nawaka	Nandi
Noi Vunatoto	Nawaka	Nawaka	Nawaka	Nandi
Noi Yasawa	Nambitu	Rararua	Rukuruku	Nandi
Raiwangga	Raiwangga	Uto	Rukuruku	Nandi
	(the same)	Nawanggandamu	Rukuruku	Nandi
Rara	Rara	Nanggia	Nayavu	Tailevu
Salatu	Salatu, Taivun- galei Dist., Tailevu Prov.	Nakalawatha	Namalata	Tailevu
Sayake	Sayake near Navatusila, Vatumalimali	Nuku	Nuku	Serua
Tai	Tai	Luvunavuaka	Namena	Tailevu
	Korombasuka to Mbua	Naseva	Taivungalei	Tailevu
Taivungalei	Taivungalei near Nameka Village	Taivungalei	Taivungalei	Tailevu
	(the same)	Natuva	Taivungalei	Tailevu
Tambukasivi		Kiuva	Mbau	Tailevu
Tathi	Lau	Silana	Ndawasamu	Tailevu
Tathilevu	Tathilevu, Namalata	Matathauthau	Namalata	Tailevu
Tholoinasau	Tholoinasau	Mburerua	Namalata	Tailevu

YAVUSA FROM THE KAUVANDRA MOUNTAINS (cont.)

Yavusa	Old Village	Present Village	District	Province
Thonua	Yauyau, Mba	Koroiatha	Sambeto	Nandi
Tonga	Tonga, near Visa Village, Vungalei Dist., Tailevu Prov.	Nakorolevu	Namara	Tailevu
Tova	Tova	Nasinu	Ndawasamu	Tailevu
Tuikoro	Korolevu, Namara Dist., Tailevu Prov.	Nananu	Namena	Tailevu
Tuinawainovo .	Nawainovo, Ndawasamu Dist., Tailevu Prov.	Namburenivalu	Namena	Tailevu
Tumbai	Nasaunoko- noko, Navosa	Mbengga	Nuku	Serua
Tunindau		Soso (Mbau)	Mbau	Tailevu
Ua	Nambua	Saunaka	Nandi	Nandi
Vanukula	Vitongo Hill	Vitongo	Vitongo	Lautoka
Vatuthou	Vatuthou	Mburelevu	Namena	Tailevu
Voni	Voni	Ndriti	Ndawasamu	Tailevu
Vunatangga . . .	Vunatangga	Vatutu	Nawaka	Nandi
Vusu	Vusu, Noikoro Dist., Tholo West Prov.	Mbiyausevu	Komave	Tholo West
	(the same)	Namatakula	Komave	Tholo West
	(the same)	Komave	Komave	Tholo West
	(the same)	Vunimaravu	Komave	Tholo West
	(the same)	Namayava	Komave	Tholo West
	(the same)	Wainandiro	Nuku	Serua
Werelevu	Matanavatu	Rararua	Rukuruku	Nandi
Yasa	Kumi, then to Yasa	Kumi	Verata	Tailevu

TRIBES FROM ORIGIN PLACES OTHER THAN KAUVANDRA

Yavutu from which two or more yavusa were derived may be regarded as more important than those from which only a single one came. The Kuvandra Mountains, already discussed, are the reputed yavutu of numerous tribes, and consequently the most important. Other yavutu in Viti Levu have from nine to one yavusa. I have broken these down into three groups, as follows: (1) those with more than two tribes; (2) those with two tribes; (3) those with a single tribe.

Five provinces contain no yavusa of Kuvandra origin, none of known Polynesian origin, and none without origin places. These are the provinces of Ra (exclusive

of the Kuvandra Mts.), Naitasiri, Namosi, Tholo East, and Tholo North.

It seems likely that yavutu claimed by two or more yavusa are indication that such yavusa may be related in origin. Such relationship, of course, can only be established by legends and genealogies.

ORIGIN PLACES WITH MORE THAN TWO TRIBES

I have arranged these yavutu in descending order of number of yavusa, from nine to three. Each yavutu name is used as a paragraph side head.

Waithomba. — The nine yavusa listed below claim Waithomba District, Nandronga Province, as their yavutu.

<u>Yavusa</u>	<u>Present Village</u>	<u>District</u>	<u>Province</u>
Likulolo	Nasovotava	Waithomba	Nandronga
Nalimoulevu	Vangandra	Waithomba	Nandronga
	Volivoli	Nasingatoka	Nandronga
Nasawene	Narata	Waithomba	Nandronga
Noi Narongi	Nasovotava	Waithomba	Nandronga
Noi Nasesevia	Narewa	Waithomba	Nandronga
Noi Natualeka	Vatutoko	Waithomba	Nandronga
Noi Yasawa	Narata	Waithomba	Nandronga
Tavarua	Narata	Waithomba	Nandronga
	Natawatawandi	Nanggalimare	Tholo West
Werelevu	Narata	Waithomba	Nandronga

Verata. — Eight yavusa claim Verata as their yavutu. The ancient village site of Verata (archaeological site 2)²⁴ is famous, according to Sir Lala Sukuna, as the yavutu of yavusa forming parts of the nineteenth-century rival kingdoms of Mbau and Rewa. Ancient Verata is in Verata District, Tailevu Province.

<u>Yavusa</u>	<u>Old Village</u>	<u>Present Village</u>	<u>District</u>	<u>Province</u>
Mburetu		Naloto	Verata	Tailevu
Naikasakasa	Naikasakasa	Kumi	Verata	Tailevu
Nokonoko	Namata, Namata Dist., Tailevu Prov.	Navatuyamba	Tonga	Rewa
Tathilevu	Lokia, Rewa Prov.	Veianuyanu	Tonga	Rewa
Verata	Motonoko, Viria Dist., Naitasiri Prov.	Viria	Viria	Naitasiri
Vunivalu	Landed at Vunda, Lautoka Prov., then to Verata	Uthunivanua	Verata	Tailevu
Vuniyavu	Namako	Nanduria	Ndreketi	Rewa
Wainasuwe	Namako	Nakorovou	Ndreketi	Rewa

Saivou. — Saivou District, Ra Province, is the origin place of the seven yavusa listed below. There is another Nakoro yavusa from yavutu Natakali, which see in this section.

<u>Yavusa</u>	<u>Present Village</u>	<u>District</u>	<u>Province</u>
Nakoro	Lutu	Muaira	Tholo East
Naroko	Rewasa	Naroko	Ra
Navitini	Navuanga	Naroko	Ra
Nawangavesi	Nanokonoko	Naroko	Ra
Tauvau	Mbuka	Naroko	Ra
Tokaimalo	Mbureloa	Nakuailava	Ra
Vatundamu	Naiserelangi	Naroko	Ra

Endronu. — One of the most interesting yavutu for more than two yavusa is Endronu, on the Tualeita Range, which is near Vunda, Lautoka Province. The five yavusa listed below claim Endronu as their yavutu. All now live in the Sambeto District, Nandi Province, close to

the Tualeita Range which lies between Sambeto District and our site Vunda (site 26). In the list supplied by Setariki M. Koto, M.B.E., from the records of the Native Lands Commission, is the following comment concerning the Tualeita Range: "[The god]Ndengei was

²⁴Gifford, 1951a, p. 243.

there also before Kouvandra." This, I assume, refers to the "second" Ndengei, who, according to legend²⁵, traveled from the Vunda region to Nakouvandra. The Vunda people give primacy to Lutunasombasomba, commander of the ship Kaunitoni, and make Ndengei his assistant. The Tualeita Range is that which Lutunasombasomba and his followers ascended, when they set out from Vunda for the Kouvandra Mountains. As they ascended Tualeita, they bent the trees over with their hands, thus giving rise to the name Viti (to bend or to break) for the island Viti Levu, according to my Vunda informants. Lutunasombasomba died while en route to

Kouvandra. The Tualeita Range is the western part of the pathway of the dead, the Kouvandra Range the eastern part.

<u>Yavusa</u>	<u>Present Village</u>
Leweikoro	Namboutini
Leweindrasa	Nandele
Leweiwawuwavu	Nakorokoroyawa
Ne	Nandele
Waruta	Natalau

Mburembasanga. — Five yavusa claim Mburembasanga, in the district of that name in Rewa Province, as their yavutu. (Ratu Rambithi Vuikandavu Longavatu, who served as my aide in archaeological work, is a member of the matanggali Valelevu of the yavusa Mburembasanga, listed below.)

<u>Yavusa</u>	<u>Old Village</u>	<u>Present Village</u>	<u>District</u>	<u>Province</u>
Mburembasanga	Lomanikoro	Lomanikoro	Rewa	Rewa
Mburenivalu	Naivindamu	Ndraumbuta	Tokatoka	Tailevu
Naimbatisuli	Nameremere	Ndraumbuta	Tokatoka	Tailevu
Natheruku	Nambitu	Tokatoka	Tailevu
Navirourou	Vuthi	Tokatoka	Tailevu

Namboutini. — The yavutu Namboutini, in Sawakasa District, Tailevu Province, is the source of five yavusa, all living in Tailevu Province today.

<u>Yavusa</u>	<u>Old Village</u>	<u>Present Village</u>	<u>District</u>
Mbure	Vatulawalawa	Sawakasa	Sawakasa
Nambati	Nambati	Nanau	Namena
Nambuto	Nambuto	Vorovoro	Ndawasamu
Waimaro	Taunovo, Naloto Dist., Tailevu Prov.	Mburerua	Sawakasa
	(the same)	Sawakasa	Sawakasa
Wainivesi	Veikau	Sawakasa	Sawakasa

Natakali. — Claiming their yavutu named Natakali, at Taivungalei, Taivungalei District, Tailevu Province, are the following four yavusa. Another Nakoro yavusa, with yavutu at Saivou, lives in Tholo East Province. See yavusa listed under Saivou in this section.

<u>Yavusa</u>	<u>Old Village</u>	<u>Present Village</u>	<u>District</u>	<u>Province</u>
Nakoro	Natoaika	Naitasiri	Naitasiri
Ravunivungalei	Matanikoroiwalu	Nanggalendam	Namata	Tailevu
Vungalei	Mbotia	Kasavu	Naitasiri	Naitasiri
	Mbotia	Natoaika	Naitasiri	Naitasiri
	From Verata to Natakali	Visa	Vungalei	Tailevu
	From Verata to Natakali	Savu	Vungalei	Tailevu
	From Verata to Natakali	Tombuninggio	Vungalei	Tailevu
	Natalatu	Naisaumua	Tai	Tailevu
Vunisanggiwa	Sote	Vungalei	Tailevu

Kavuwa. — The location of the yavutu Kavuwa was not recorded, although it is the source of four yavusa, residing principally in Mba Province.

<u>Yavusa</u>	<u>Old Villlage</u>	<u>Present Village</u>	<u>District</u>	<u>Province</u>
Namathuku	Sasa	Mbulu	Mba
		Nailanga	Nailanga	Mba
		Nasolo	Nailanga	Mba
		Tambalei	Mangondro	Tholo West
Nakusarau	Nakusarau	Tongalevu	Mbulu	Mba
	Nakusarau	Nailanga	Nailanga	Mba
Tio	Sorokomba	Mbulu	Mba
		Nailanga	Nailanga	Mba

²⁵Gifford, 1951b, p. 170.

Tukani	Bank of Navisa Creek (the same) (the same)	Sorokomba Nailanga Natutu	Mbulu Nailanga Nailanga	Mba Mba Mba
------------------	---	-------------------------------------	-----------------------------------	-----------------------

Nasautoka. — Nasautoka District, Tholo East Province, is the yavutu of four yavusa, one with the name Nasautoka. The four yavusa with Nasautoka yavutu are the following:

<u>Yavusa</u>	<u>Old Village</u>	<u>Present Village</u>	<u>District</u>	<u>Province</u>
Naivuthini	Naivuthini	Vuna	Wailevu	Tailevu
Nasautoka	Nakorolevu, Namara Dist., Tailevu Prov.; Ndelai (the same) (the same)	Mburenitu Naloto Vuna	Nasautoka Nasautoka Nasautoka	Tholo East Tholo East Tholo East
Rara	Rara, Naitasiri Prov.	Wailotua	Wailevu	Tailevu
Wailevu	Wailevu, Tailevu Prov.	Wailotua	Wailevu	Tailevu

Vunda. — Four yavusa claim ancient Vunda (archaeological site 26)²⁶ as their yavutu. Vunda is in Vunda District, Lautoka Province. These four yavusa still live in villages in Vunda District, though no one lives any longer at the ancient site.

The yavusa Sambutoyatoya named Yavuna as well as Vunda as its yavutu. The location of Yavuna is not known. Furthermore this yavusa, or a part of it, travelled to Ra Province. The statement concerning this, in the Land Office data supplied to me, reads as follows: "To Nakauvandra, Ra; some landed at Malake Island." They perhaps returned to Vunda, as there is no record of them in Ra in modern times.

<u>Yavusa</u>	<u>Old Village</u>	<u>Present Village</u>
Kai Vunda	Yandro, according to author's Vunda informants.	Lauwaki
Sambutoyatoya		Visesei
Thawanisa	Nathokoti	Lomolomo
Viyangoisaukova	Nasorovakatini	Nanganga

Korolevu. — Four yavusa name Korolevu as their yavutu but there is no assurance that it is always the same Korolevu, since Korolevu is a common name and the locations of these four are not given. However, three of these yavusa are also named Korolevu. Without further inquiry it is impossible to be sure that these three are all one yavusa, although the two in Ra Province likely are.

<u>Yavusa</u>	<u>Present Village</u>	<u>District</u>	<u>Province</u>
Korolevu	Vatutu Mbarotu Nawairuki	Nawaka Saivou Lawaki	Nandi Ra Ra
Tambariki	Waimbasanga	Muaira	Tholo East

Mburenitu. — There are several Mburenitu yavutu, one in Ra Province (probably the village of Mburenitu in Nalawa District), another in Namataku District, Tholo West Province, listed under "Origin Places with Two Tribes." There are also two other Mburenitu yavutu listed under "Origin Places with Single Tribe."

In Ra Province the yavusa claiming Mburenitu as their yavutu are as follows:

<u>Yavusa</u>	<u>Present Village</u>	<u>District</u>
Mburenitu	Mburenitu Navolau Navuniivi Nailawa	Nalawa Navolau Navitilevu Tokaimalo
Ndama	Sowa Mbureimbau	Mbureivanua Mbureiwai
Namolimbale	Sowa	Mbureivanua

Nailango. — Three yavusa, one named Mburenitu, claim as their yavutu Nailango, the location of which is not recorded, but it might well be in Nambaitavo District, Naitasiri Province, where the three yavusa now live.

<u>Yavusa</u>	<u>Present Village</u>
Mburenitu	Nambaitavo
Mburewatu	Nambaitavo
Navakatalewai	Navoka

Namasia. — The yavutu Namasia is probably in Ra Province, since the three yavusa claiming it as yavutu all live at present in Ra Province. They are the following:

<u>Yavusa</u>	<u>Present Village</u>	<u>District</u>
Nalaumbu	Matawailevu	Nalawa
Namasia	Soweri	Lawaki
Tikoivatu	Matawailevu	Nalawa

Nanggali. — Nanggali, perhaps in Naitasiri Province, is the yavutu of three yavusa living in the province.

<u>Yavusa</u>	<u>Present Village</u>	<u>District</u>
Nanggali	Nandakuni	Nawaindina
Nawaindina	Kalambu	Naitasiri
Rokotuitai	Navuso	Naitasiri

²⁶Gifford, 1951a, pp. 199-202.

ORIGIN PLACES WITH TWO TRIBES

Only two yavusa in this section, Nasaumatua and Sawa, are not attributed to Viti Levu or one of its satellites but to another Fijian Island, Ovalau Island, their yavutu being Nasaumatua at Lovoni. Under the heading "Origin Places with Single Tribe" is listed the yavusa Navatulevu from the yavutu Nandi, Mbua Province, Vanualevu Island.

Of special interest are two yavusa claiming as yavutu the modern village of Lomolomo in Vunda District, Lautoka Province. These are the yavusa Lomolomo and Tumbumbere, both now residing in the Vunda District. The yavusa Tumbumbere lives in Viseisei Village. The Lomolomo reside at Lomolomo Village which is also

their yavutu. This is the site of the rock, now carefully fenced and covered, where the legendary immigrant leader Lutasombasomba bade farewell to those followers who elected to remain behind at Vunda, while he and others set out for the Kouvandra Mountains.²⁷

In the following list, yavutu with two tribes are listed alphabetically (Lomolomo excepted) as the best means of bringing together the pairs of yavusa claiming the same yavutu. Some others, as in the list of those from the Kouvandra Mountains, are named for old villages occupied by the tribes after leaving their yavutu, but before settling in their present villages. The word district when enclosed in quotation marks, does not signify a modern governmental division.

²⁷Gifford, 1951b, p. 169. See also Capell and Lester, p. 326.

YAVUTU WITH TWO YAVUSA

Yavutu	Location	Yavusa	Old Village	Present Village	District	Province
Korosenga-senga.		Nalewandina		Naisausau	Namara	Tailevu
Korosenga-senga.		Naveisere		Naisausau	Namara	Tailevu
Kumbuna	Nayavu Dist., Tailevu Prov.	Kumbuna ²⁸		Mbau	Mbau	Tailevu
Kumbuna	(the same)	Nggalivakambau		Nakoroivau	Mbau	Tailevu
Kumbuna	(the same)			Namuka	Mbau	Tailevu
Lombau		Lombau		Mokani	Ndravo	Tailevu
Lombau	Near Nanduru Village, Nausori Dist., Tailevu Prov.	Vunivivi		Nausori	Nausori	Tailevu
Lutu	Lutu Village, Lutu Dist., Tholo East Prov.	Lutu		Lutu	Lutu	Tholo East
Lutu	(the same)	Lutu		Nanukaloa	Lutu	Tholo East
Lutu	(the same)	Navunikavika		Lutu	Lutu	Tholo East
Matai		Matai		Naila	Ndravo	Tailevu
Matai	Mburembasanga, Rewa Prov.	Navakasombuoka		Mburemba- sanga	Mburemba- sanga	Rewa
Mburelevu	Raviravi Dist.	Mburelevu		Vitawa	Raviravi	Ra
Mburelevu				Nambukandra	Kavula	Ra
Mburelevu		Sau		Nayavuiria	Navitilevu	Ra
Mburenitu	Namataku Dist., Navosa, Tholo West Prov.	Mburenitu	Namoli	Nambukelevu	Komave	Tholo West
Mburenitu	(the same)	Vusaratu	Korolevu, Noikoro Dist., Tholo West Prov.	Vunanui	Serua	Serua
Naikasakasa . . .		Naivakalau	Naivakalau, a hill at Ndelaitai	Naisaumua	Tai	Tailevu
Naikasakasa . . .		Nautu	Nautu, then to Naivisoma near Naitutu Village, Namalata Dist., Tailevu Prov.	Ndravuni	Tai	Tailevu
Naisongoliku. . .	Naisongoliku, (site 17), Ravi- ravi Dist., Ra Prov.	Naisongoliku		Vitawa	Raviravi	Ra

²⁸The chiefly yavusa of Mbau Island. See Derrick, p. 54, n. 4.

YAVUTU WITH TWO YAVUSA (cont.)

Yavutu	Location	Yavusa	Old Village	Present Village	District	Province
Naisongoliku . .	(the same)	Ndaunavatu		Nandongoloa	Mbureiwai	Ra
Naitasiri	Naitasiri	Matanikutu	Mburekonotho	Nanggarani	Notho	Rewa
Naitasiri				Tamavua	Naitasiri	Naitasiri
Naitasiri		Naitasiri	Mbole	Wailevu	Nailenga	Tholo East
Naivakathau . .	Near Taivunga- lei, Tailevu Prov.	Naivakathau		Naisausau	Namata	Tailevu
Naivakathau . .	(the same)	Naivakathau		Nanggalendamu	Namata	Tailevu
Naivakathau . .		Namara		Naivakathau	Mburetu	Tailevu
Nakauraki . . .	Nasaunokonoko, Namosi Prov.	Nakauraki	Totonakavu	Muanaira	Vutia	Rewa
Nakauraki . . .		Nukutambua	Yanutha Id.	Yanutha Id.	Serua	Serua
Nakorolevu . . .	Tonga Id., Rewa Prov.	Nakorolevu		Muana	Tonga	Rewa
Nakorolevu . . .	(the same)	Vuthi		Navatuyamba	Tonga	Rewa
Nakorolevu . . .	(the same)			Savatha	Tonga	Rewa
Nambila	Vaturu	Nasau		Natawa	Vaturu	Nandi
Nambila	Vaturu	Yalatina		Yavuni	Vaturu	Nandi
Nambila	Vaturu			Vatunaremba	Vaturu	Nandi
Nambulu		Nambulu		Tukuraki	Nalotawa	Mba
Nambulu		Taumbere	Wala	Tukuraki	Nalotawa	Mba
Nanumbu		Ketenamasi		Sanasana	Malomalo	Nandronga
Nanumbu				Nasingatoka	Nasingatoka	Nandronga
Nanumbu				Lomawai	Wai	Nandronga
Nanumbu		Leweitangga- lulu		Sanasana	Malomalo	Nandronga
Nasau	Mouth of Nan- di River	Noi Nainggoro	Nainggoro	Navothi	Nandi	Nandi
Nasau	(the same)	Tukani		Namotomoto	Nandi	Nandi
Nasau	Nasau "Dist.," Tholo North Prov.	Nasau		Nasau	Nandrau	Tholo North
Nasau	(the same)	Nasau		Ovalau	Nandrau	Tholo North
Nasau		Nasau		Naivotho	Mbureiwai	Ra
Nasaumatua . .	Lovoni, Ovalau Id.	Nasaumatua		Ndaku	Mburetu	Tailevu
Nasaumatua . .	(the same)	Sawa		Ndaku	Mburetu	Tailevu
Natokea		Natokea		Namuaimanda	Navolau	Ra

YAVUTU WITH TWO YAVUSA (cont.)

Yavutu	Location	Yavusa	Old Village	Present Village	District	Province
Natokea		Rara		Navolau	Navolau	Ra
Ndravo		Nangarorua	Naisongovau	Naisongovau	Ndravo	Tailevu
Ndravo		Navitomi		Ndravo	Ndravo	Tailevu
Uluithalia		Thalia		Vuniniundrovu	Naitasiri	Naitasiri
Uluithalia		Vuniniumatarua		Vuniniundrovu	Naitasiri	Naitasiri
Vanuasanga-sanga		Vindilo	Vitongo	Namoli	Vitongo	Lautoka
Vanuasanga-sanga		Viyangonivalu	Vitongo	Nalotawa	Nalotawa	Mba
Vanuasanga-sanga			Vitongo	Nanuku	Nalotawa	Mba
Vanuasanga-sanga			Vitongo	Navilawa	Nalotawa	Mba
Vanuasanga-sanga			Vitongo	Tukuraki	Nalotawa	Mba
Vaturua		Nasausauwai		Namarai	Nakorotumbu	Ra
Vaturua		Vaturua		Lau	Nambamba	Ra
Vaturua				Vaturua	Nakelo	Tailevu
Viria		Nathowaliva		Viria	Viria	Naitasiri
Viria		Nanduanuku		Tholoisuva	Vuna	Naitasiri
Vitongo Hill		Nambakai		Naviyango	Vitongo	Lautoka
Vitongo Hill		Tunuloa		Vitongo	Vitongo	Lautoka
Viwa	Naitasiri Prov.	Nayaumunu		Viwa Id.	Mbau	Tailevu
Viwa		Viwa		Ndelandamanu	Naitasiri	Naitasiri
Vunimoli		Muaisolia		Waindrathia	Rara	Naitasiri
Vunimoli		Vunimoli		Waindrathia	Rara	Naitasiri
Vutuvo		Naluna	Naluna	Vunivaivai	Nakelo	Tailevu
Vutuvo		Vutuvo		Vunivaivai	Nakelo	Tailevu

ORIGIN PLACES WITH SINGLE TRIBE

In the following pages are listed the yavutu with only a single yavusa each. The two tribes claiming origin places in the kingdom of Tonga are not included here since they are already covered in the section on "Tribes from Polynesia." The arrangement is alphabetically by yavusa. Some yavusa are scattered through several villages, as, for example, yavusa Louvatu which has its yavutu at archaeological site 19 in the Singatoka

Valley.²⁹

All thirteen provinces contain single yavusa derived from a single yavutu. There is a considerable variation in the number per province, but this is in part a function of the size of the province. In descending order the number per province are as follows; those living in two provinces are counted twice: Ra 89, Tholo East 59, Tailevu 57, Naitasiri 39, Rewa 25, Tholo North 23, Nandi 22, Nandronga 18, Namosi 10, Mba 9, Tholo West 6, Lautoka 3, Serua 1.

²⁹Gifford, 1951a, p. 250.

YAVUTU WITH SINGLE YAVUSA

Yavusa	Yavutu	Location	Old Village	Present Village	District	Province
Ekumbu	Ekumbu			Vunayasi	Nandi	Nandi
				Volivoli	Nasingatoka	Nandronga
Kelia	Kelia		Nasei	Naluwai	Rara	Naitasiri
Ketenavuni- valu	Wavu			Navisamba- samba	Malomalo	Nandronga
Koro	Korovou			Nakoromboya	Nggaliyalatina	Tholo North
				Nakoromboya	Tavua	Tholo North
				Narambulu	Tavua	Tholo North
Koronggele	Koronggele			Nakorovatu	Waima	Tholo East
Korosovau- levu	Korosovau- levu			Nariri	Nailuva	Ra
Laitoa	Laitoa			Naivutu	Tokaimalo	Ra
				Nararavou	Nailuva	Ra
Langi	Langi			Mburelevu	Nalamba	Ra
Leikoro	Navuniyasi	Naloto Dist. Nandronga Prov.		Mbalevuto	Naloto	Nandronga
				Tonge	Naloto	Nandronga
				Nandrungu	Naloto	Nandronga
Leinatambua . .	Naivua			Yaloku	Nalotawa	Mba
Levukaitai . . .	Levukaitai			Tumavia	Nakelo	Tailevu
Levukana	Veimbalambala		Verata to Veimbalambala	Tumbalevu	Namara	Tailevu
Leweiesinga . .	Esinga	Nalele, Malo- malo Dist., Nandronga Prov.		Sanasana	Malomalo	Nandronga
Leweinavi- vasa	Naweitha			Nalele	Malomalo	Nandronga
				Naindiri	Malomalo	Nandronga
Leweingere . .	Nggere			Navisamba- samba	Malomalo	Nandronga
Leweinuku . . .	Nuku, Nasama	Nasingatoka Dist. Nandronga Prov.		Malomalo	Malomalo	Nandronga
				Nalele	Malomalo	Nandronga
				Navisamba- samba	Malomalo	Nandronga
Lewisavu	Savu, Nalele	Malomalo Dist. Nandronga Prov.		Malomalo	Malomalo	Nandronga
				Momi	Momi	Nandronga
Leweiuthini . .	Valivali	Lawai, Nokonoko Dist., Nandronga Prov.	Nakorowaru, Nasingatoka, Nandronga Pro Prov.	Nalele	Malomalo	Nandronga

YAVUTU WITH SINGLE YAVUSA (cont.)

Yavusa	Yavutu	Location	Old Village	Present Village	District	Province
Loma	Waimothi			Nakorosule	Nangonenitholo	Tholo East
Loma	Loma			Navatukia	Soloira	Tholo East
				Waikalou	Soloira	Tholo East
Lomaivuna . . .	Lomaivuna		Motonoko, Viria Dist., Naitasiri Prov.	Viria	Viria	Naitasiri
Lomolilevu . . .	Vungala			Nandrauniivi	Raviravi	Ra
Louvatu	Lomolomo (site 19)	near Lawai, Nokonoko Dist. Nandronga Prov.		Nakambuta	Nokonoko	Nandronga
				Nasama	Nasingatoka	Nandronga
			Nakoroyandro, near Nandrou- mai	Thuvu	Thuvu	Nandronga
			(the same)	Yandua Voua	Thuvu Tuva	Nandronga Nandronga
			Nasinu, Rewa Prov., to Mbengga Id. ³⁰ , to Koroniviatai	Vunavutu	Nasingatoka	Nandronga
Malake	Malake	Malake Id.		Nambuke	Rakiraki	Ra
Mali	Mali			Naseyani	Tavua	Tholo North
Maraki	Maraki			Naselai	Nuku	Tailevu
Mataikara . . .	Mataikara			Nawairuku	Lawaki	Ra
Matailombau . .	Matailombau	Matailombau		Matailombau	Matailombau	Tholo East
Mantanikoro- vatu	Ndrevekai			Kalambu	Naitasiri	Naitasiri
Matanimbulu . .	Vunimbulu	Viria, Naitasiri Prov.		Oveya	Mbau	Tailevu
Matanivanua . .	Waikete			Waikete	Nakelo	Tailevu
Mataniwai . . .	Mataniwai			Ndelaitonga	Matailombau	Tholo East
Mataravua . . .	Mataravua			Nawairuku	Lawaki	Ra
Matarua	Matarua			Navitilevu	Nambamba	Ra
Mataso	Mataso	Mataso Dist.		Nakorovou	Mataso	Ra
Mati	Mati			Vunindumba	Matailombau	Tholo East
Maumi	Maumilevu	near Raralevu, Namata Dist., Tailevu Prov.	Maumi Id.	Maumi	Ndravo	Tailevu
Mavua	Mavua			Tumbeirata	Mavua	Tholo West
Mawa	Mawa			Nambalambala	Nalamba	Ra
Mbatimbuku- tua	Mbatimbukutua			Namelimeli	Veivatuloa	Namosi
Mbau	Mbau	on Tholata R.		Ndrekeniwai	Nayavu	Tailevu

³⁰Information obtained by Gifford from Ratu Joni, Mbuli of Nasingatoka District.

YAVUTU WITH SINGLE YAVUSA (cont.)

Yavusa	Yavutu	Location	Old Village	Present Village	District	Province
Mbaulevui-rara	Mbaulevu			Tovutovu	Naitasiri	Naitasiri
Mbelanga	Mbelanga			Nandelei	Tavua	Tholo North
Mbiavala	Tumulevu	Singatoka R.		Nakambuta	Nokonoko	Nandronga
Mbila	Mbila	Mbila, near Tavua Village		Tavua	Tavua	Tholo North
				Korovou	Tavua	Tholo North
				Vatutavui	Tavua	Tholo North
Mbua	Mbua			Vitawa	Raviravi	Ra
Mbukuya	Mbukuya			Mbukuya	Mangondro	Tholo West
Mbukuya	Navulala	Teindamu		Teindamu	Vitongo	Lautoka
Mburekalou.	Naletha	Verata	Namatanivesi at Kuku	Molituva	Nausori	Tailevu
Mburekonotho	Mburekonotho	Notho		Navaka	Notho	Rewa
				Nakuriwai	Notho	Rewa
				Matanimoli	Notho	Rewa
Mburemathi	Mburemathi		Natholawe, Naloto, Nasautoka Dist., Tholo East Prov.	Naloto	Nawautoka	Tholo East
			(the same)	Mburenitu	Nasautoka	Tholo East
Mbureningandro	Nakoro	Naselai		Naselai	Nuku	Tailevu
Mburenitu	Wainalumu			Kasavu	Naitasiri	Naitasiri
Mburenitu	Onila			Naevuevu	Thuvu	Nandronga
			Somosomo	Nambotini	Komave	Tholo East
Mburenivalu	Nandoi	Namosi Prov.	Tavuya	Levuka	Rewa	Rewa
			Ngusuinalanga to Rama to Lokia, Rewa Prov.	Nandoi	Rewa	Rewa
			Naiteni	Narothivo	Rewa	Rewa
			Nakuru to Ndrekena	Ndrekena	Rewa	Rewa
Mburenivalu	Nandoi	Namosi Prov.	Ngusuinalanga	Vunuku	Rewa	Rewa
Mbureniwau	Mbureniwau	Vutia, Tholo East Prov.	Naitasiri to Mburembasanga, Rewa Prov.	Waisalulu	Vutia	Rewa
Mburerua	Mburerua			Motonoko	Viria	Naitasiri
Mburetu	Mburetu	Mburetu		Mburetu	Mburetu	Tailevu
				Nambitu	Tokatoka	Tailevu

YAVUTU WITH SINGLE YAVUSA (cont.)

Yavusa	Yavutu	Location	Old Village	Present Village	District	Province
Mburevuli . . .	Mburevuli			Manu	Nailenga	Tholo East
Molimekete . . .	Molimekete			Waikalou	Soloira	Tholo East
Naikawanga . . .	Naikawanga		Verata to Naikawanga	Nakalawatha	Namara	Tailevu
Nailangolamba .	Kuku			Nanduru	Nausori	Tailevu
				Molituva	Nausori	Tailevu
				Vunimono	Nausori	Tailevu
Nailenga	Nailenga	Nailenga		Nailenga	Nailenga	Tholo East
Naimalavau . . .	Naimalavau			Naimalavau	Nakelo	Tailevu
Naimbili	Naimbili	Waimaro, Namalata Dist. Tailevu Prov.		Raralevu	Namata	Tailevu
Naingani	Naloto	Naloto, Verata Dist.	Naingani Id.	Vitilevu, Naingani Id.	Verata	Tailevu
Naiova	Naiova	Nasau "Dist." Tholo North Prov.		Nailuva	Nailuva	Ra
				Nasukamai	Nandrau	Tholo North
Nairai	Nairai			Vunindumba	Matailombau	Tholo East
Nairara	Nairara			Namuaimanda	Navolau	Ra
Naisongombuli	Naisongombuli	Nasau "Dist." Tholo North Prov.		Nukulau	Nandrau	Tholo North
Naisongovasa .	Naisongomataka	Mburembasanga		Mburembasanga	Mburembasanga	Rewa
Naitavuni	Naitavuni			Naseuvou	Nawaindina	Naitasiri
				Ndelalacakau	Nawaindina	Naitasiri
Naivirivosa . . .	Naivirivosa	Nawanggambena, Viria Dist., Naitasiri Prov.		Vuthi	Tokatoka	Tailevu
Naivisere	Naivisere		Naitasiri	Navuso	Naitasiri	Naitasiri
Naiwau	Vanuandina			Vanuandina	Tokatoka	Tailevu
Nakaindrau . . .	Nambilia			Nasalia	Nangonenitholo	Tholo East
				Lutu	Nangonenitholo	Tholo East
Nakakasara . . .	Nakakasara	near Waivou Village, Mbur- embasanga Dist., Rewa Prov.		Vanualevu	Tokatoka	Tailevu
Nakarukuruku .	Nakarukuruku			Navutu	Navuakethe	Naitasiri
Nakase	Nakase			Sowa	Mbureivanua	Ra

YAVUTU WITH SINGLE YAVUSA (cont.)

Yavusa	Yavutu	Location	Old Village	Present Village	District	Province
Nakasenga . . .	Nakasenga			Nayaulevu	Tokaimalo	Ra
Nakasimai	Nakasimai			Lamba	Nakuailava	Ra
				Mbureloa	Nakuailava	Ra
Nakatumbai-walu	Nambiyau			Nawanggambena	Navuakethe	Naitasiri
				Nanduruloulou	Navuakethe	Naitasiri
Nakelo.	Nakelo	Nakelo Dist.		Nauluvatu	Nakelo	Tailevu
				Muana	Nakelo	Tailevu
Nakoroingeti . .	Nakoroingeti			Ndausinga	Nakualiava	Ra
Nakoromatua .	Nakoromatua			Naraviravi	Tokaimalo	Ra
Nakoronduanua	Waimaro			Nakorosule	Nangonenitholo	Tholo East
Nakoronggele .	Nakoroira			Lau	Nambamba	Ra
Nakorosango . .	Nakorosango			Nanau	Tavua	Tholo North
Nakorotambu. .	Nakorotambu			Waituruturu	Mataso	Ra
				Nakorovou	Mataso	Ra
				Veindavutu	Mataso	Ra
				Nambau	Mataso	Ra
Nakorovia	Nakorovia			Sowa	Mbureivanua	Ra
Nakorovou . . .	Nakelingere			Mataiwailevu	Lawaki	Ra
				Korovou	Lawaki	Ra
Nakorowaiwai .	Nakorowaiwai			Waimbasanga	Noimalo	Tholo East
				Matawailevu	Noimalo	Tholo East
				Wainiyavu	Veinunga	Namosi
Nakorowangga .	Nakorowangga			Nairukuruku	Matailombau	Tholo East
Nakuailava . .	Nakualiava	Nakuailava Dist.		Tai	Nakuailava	Ra
				Mbalekinanga	Nakuailava	Ra
Nakumbuti . . .	Vatukaloko			Nandrauniivi	Raviravi	Ra
Nakurukuru . .	Nakurukuru			Naluwau	Rara	Naitasiri
Nakurukuru-vakatini	Nakurukuru-vakatini		Tomuna, Vatu-kumbu	Nasauvere	Noimalo	Tholo East
				Korovou	Noimalo	Tholo East
				Naraiyawa	Noimalo	Tholo East
Nalethava. . . .	Nalethava	Naitasiri	Naisombu-sombu	Ndraumbuta	Tokatoka	Tailevu
Naleya	Naleya		Mburelevu	Nasava	Noimalo	Tholo East
				Matawailevu	Noimalo	Tholo East

YAVUTU WITH SINGLE YAVUSA (cont.)

Yavusa	Yavutu	Location	Old Village	Present Village	District	Province
Naliwa	Naliwa			Vuisinga	Waima	Tholo East
Naliwani	Naliwani			Mburelevu	Nalamba	Ra
				Navuniyaumumu	Tokaimalo	Ra
Nalotawa	Nalotawa			Sanasana	Malomalo	Nandronga
Nalovia	Nalovia			Ndelaitonga	Matailombau	Tholo East
Namataku	Namataku	Namataku		Nasauthoke	Namataku	Tholo West
				Nausori	Namataku	Tholo West
				Tawaleka	Namataku	Tholo West
Namatangai	Namatangai			Raranivuli	Nakuailava	Ra
Namathuku	Namathuku			Tongovere	Raviravi	Ra
Nambai	Naivikoli			Naila	Ndravo	Tailevu
Nambama	Nambama			Vunindawa	Soloira	Tholo East
Nambavatu	Nambavatu			Nanggaleng-gangga	Mbureivanua	Ra
Nambena	Nambena			Namoto	Nasautoka	Tholo East
Nambili	Louvatu ³¹	Nawamangi		Vatukarasa	Thonua	Tholo West
Namboro	Namboro			Sawanikula	Muaira	Tholo East
Nambotini	Nambotini			Lawaki	Lawaki	Ra
				Mataiwailevu	Lawaki	Ra
Nambou	Lasakau	foot of the Kauravandra Range		Lasakau (Mbau)	Mbau	Tailevu
Namboutini	Vunikoka			Lamba	Nakuailava	Ra
Nambukani	Nambukani			Visama	Nakelo	Tailevu
Nambukelevu	Nambukelevu		Ngusunikalou	Lutu	Muaira	Tholo East
Nambukembuke ³²	Nambukembuke	Wailase Creek Tholo East		Veivatuloa	Veivatuloa	Namosi
				Lombau	Veivatuloa	Namosi
			Nakavu	Nakavu	Veivatuloa	Namosi
				Namosi	Namosi	Namosi
				Navunimbau	Namosi	Namosi
				Namuamua	Wainikoroiluva	Namosi
				Laselase	Wainikoroiluva	Namosi
				Navunikambi	Wainikoroiluva	Namosi
				Saliandrau	Wainikoroiluva	Namosi
			Naililili	Nasingatoka	Namosi	Namosi

³¹Name of yavutu and its location obtained by Gifford from informant at Vatukarasa.

³²For the detailed record of the Native Lands Commission, see Capell and Lester, pp. 330 ff.

YAVUTU WITH SINGLE YAVUSA (cont.)

Yavusa	Yavutu	Location	Old Village	Present Village	District	Province
			Navunisotho	Navunisotho	Veivatuloa	Namosi
			Nambukavesi	Nggilai	Veivatuloa	Namosi
			Tumbanasavu	Waivaka	Namosi	Namosi
Nambulembulewa	Nambulembulewa or Nggoma Id.	Nggoma Id.	to Ndawasamu	Nggoma	Ndawasamu	Tailevu
				Ndriti	Ndawasamu	Tailevu
Nambuli	Nambuli	Viria, Naitasiri Prov.	Nambuli	Nambuli	Ndreketi	Rewa
Nambumbutho	Nambumbutho			Nairukuruku	Matailombau	Tholo East
				Nanggelewai	Nambumbutho	Tholo North
				Rewasau	Nambumbutho	Tholo North
Namoto	Namoto	Namoto, Nasautoka Dist., Tholo East Prov.		Laselevu	Nangonenitholo	Tholo East
				Nasiriti	Nangonenitholo	Tholo East
				Nukulau	Nangonenitholo	Tholo East
				Namoto	Nasautoka	Tholo East
Namotutu	Namotutu	Rakiraki, Ra		Navuavua	Rakiraki	Ra
				Narewa	Raviravi	Ra
Nandakuni	Nandakuni	Nandakuni, Nawaindina		Ndevoira	Nawaindina	Naitasiri
Nandanuya	Nandanuya			Naluwai	Rara	Naitasiri
			Nasirotu	Nasirotu	Nawaindina	Naitasiri
				Navurevure	Nawaindina	Naitasiri
			Waitha	Vunindawa	Soloira	Tholo East
Nandaravakawalu	Nandaravakawalu	Nandaravakawalu		Naivuthini	Nandaravakawalu	Tholo East
				Naitauvoli	Nandaravakawalu	Tholo East
				Vunindumba	Nandaravakawalu	Tholo East
Nandaro	Ndelaiwini			Namara	Lawaki	Ra
Nandenaivalu	Nandenaivalu			Navitilevu	Nambamba	Ra
Nandereivalu	Nandereivalu	Lawaki Dist., Ra	Wailotua, Wailevu Dist., Tailevu Prov.	Matathauthau	Namalata	Tailevu
				Natumulomulo to Ndraundrauna	Sawakasa	Tailevu
Nandokana	Nakautonga			Narambulu	Tavua	Tholo North
Nandoloi	Nandoloi			Nandakuni	Nawaindina	Naitasiri
				Waikalou	Soloira	Tholo East

YAVUTU WITH SINGLE YAVUSA (cont.)

Yavusa	Yavutu	Location	Old Village	Present Village	District	Province
Nandomia	Nandomia			Nambitu	Tokatoka	Tailevu
Nandrakuma . . .	Nandrakuma			Nandelei	Tavua	Tholo North
				Nakoromboya	Tavua	Tholo North
Nandua	Nanduambasanga		Tamunggali	Vita	Nailanga	Mba
Nanduandua . . .	Nanduandua		Mbole, Ndela- vatulevu; Vatuvale	Naimbita	Nailenga	Tholo East
Nanduku	Nanduku	near Namoka		Nakaile	Tokatoka	Tailevu
Nangilongilo . . .	Nangilongilo	Navitilevu, Ra Prov.	Tamanivuaka, Tova	Nasinu	Ndawasamu	Tailevu
				Wainitambua	Nailenga	Tholo East
Nangole	Nangole			Nakorovatu	Waima	Tholo East
				Navithila	Naitasiri	Naitasiri
Nanggalitala . . .	Moseni	mouth of Nang- galitala Creek		Tore	Rukuruku	Nandi
Nangganikai . . .	Nangganikai			Navutu	Navuakethe	Naitasiri
Nanggau	Mburekonanggau			Motainotho	Mburetu	Tailevu
Nanggalamba . . .	Nanggalamba			Namoto	Nasautoka	Tholo East
Nanggelen - damu	Nanggalendamu			Nambukandra	Kavula	Ra
				Navutoka	Kavula	Ra
Nangelevu	Nangelevu			Lau	Nambamba	Ra
Nanggeningani- vatu	Navono			Nayaulevu	Tokaimalo	Ra
Nanuku	Nanuku			Nandakuni	Nawaindina	Naitasiri
Naothondongo . .	Naothondongo	Vutia, Tholo East Prov.	Naitasiri to Mburembasan- ga, Rewa Prov.	Muanaira	Vutia	Rewa
Narai	Narai			Nawanggarua	Nailanga	Mba
Narairaiwanga .	Rarawangga	Vaturu		Yavuni	Vaturu	Nandi
Narothake	Narothake	Verata, Tailevu Prov.	Narothake	Narothake	Notho	Rewa
Nasalia	Namuakivei			Laselevu	Nangonenitholo	Tholo East
				Nambuyalevu	Nangonenitholo	Tholo East
				Rewasau	Nangonenitholo	Tholo East
Nasausauwai . . .	Nasausauwai			Verevere	Nakorotumbu	Ra
Nasautambu . . .	Nakuruwale	Nataveyaitholo		Naseuvou	Tokatoka	Tailevu
Nasekaseka	Nasekaseka			Naivotho	Mbureiwai	Ra
Naseuvou	Naseuvou	Naseuvou, Tokatoka Dist.		Nambitu	Tokatoka	Tailevu
Nasilima	Nasilima			Naivuthini	Nandaravakawalu	Tholo East
				Naitauvoli	Nandaravakawalu	Tholo East

YAVUTU WITH SINGLE YAVUSA (cont.)

Yavusa	Yavutu	Location	Old Village	Present Village	District	Province
Nasilimai	Koronimbeka			Namara	Lawaki	Ra
Nasingaimata .	Nasingaimata			Korovou	Lawaki	Ra
Nasolo	Nasolo	Nasolo		Nailanga	Nailanga	Mba
				Nanduruloulou	Nawaindina	Naitasiri
Nasomosomo .	Nasomosomo			Ndraunaleka	Nakuailava	Ra
				Ndausinga	Nakuailava	Ra
Nasonggo	Nasonggo	Nasonggo		Nasonggo	Nambumbutho	Tholo North
Natakala	Natakala	near Savu Vil- lage, Vungalei Dist., Tailevu Prov.		Verata	Nausori	Tailevu
Natambuivalu .	Natambuivalu		Nandioka	Waisa	Waima	Tholo East
				Navunindakua	Waima	Tholo East
Natauya	Natauya			Nanukuloa	Saivou	Ra
Nataveya	Nataveya			Nataveya	Viria	Naitasiri
Nataveya	Natongandravu		Maraki, Nase- lai, Nuku Dist.	Nataveya	Nuku	Tailevu
Naterumai . . .	Naterumai		Nanggarani	Nanggarani	Notho	Rewa
				Navutu	Navuakethe	Naitasiri
Nathanggaru . .	Vuya	Nathova Id.	Nathanggaru	Moala	Sikituru	Nandi
Nathanggaru . .	Nathanggaru			Vanuakula	Navuakethe	Naitasiri
Nathavondo . . .	Nathavondo			Nasonggo	Nambumbutho	Tholo North
Nathemba	Nathemba			Nakorovatu	Rara	Naitasiri
Nathokawa . . .	Matawalu	Singatoka R.	Tumakeli	Nanduri	Nokonoko	Nandronga
				Lawai	Nokonoko	Nandronga
				Yavulo	Nokonoko	Nandronga
Nathokoni	Nathokoni	Mburembasanga		Mburembasanga	Mburembasanga	Rewa
Natholo	Nggelekuku			Mbuka	Naroko	Ra
Natholo	Vaikitu			Vatukatheva- theva	Naroko	Ra
Nathombua . . .	Nathombua	Waimaro, Nama- lata Dist., Tailevu Prov.	Nanggelen- dretaki	Namata	Namata	Tailevu
				Raralevu	Namata	Tailevu
Nathovu	Koroinathovu			Naimasimasi	Vungalei	Tailevu
Nathovu	Nathovu			Nawairuku	Lawaki	Ra
Natiliva	Navutulevu	Rakiraki, Ra		Navutulevu	Rakiraki	Ra

YAVUTU WITH SINGLE YAVUSA (cont.)

Yavusa	Yavutu	Location	Old Village	Present Village	District	Province
Naturuturuku- la	Naturuturu- kula	Nanggali, Viria Dist., Naitasiri Prov.		Vuthi	Tokatoka	Tailevu
Natutale	Tiliva	near Moala Village		Moala	Sikituru	Nandi
Naulana	Naulana			Navuniivi	Navitilevu	Ra
Navatu	Navalelawa (site 17)	Raviravi Dist.		Naivuvuni	Raviravi	Ra
Navatu	Navatu (site 17)			Namuamua	Mbureiwai	Ra
				Nandongoloa	Mbureiwai	Ra
Navatulevu . . .	Nandi	Nandi, Mbua, Vanualevu Id.	Nasau, mouth of Nandi R.	Narewa	Nandi	Nandi
				Nakavu	Nandi	Nandi
Navatulevu . . .	Nase	Vitongo	Navatulevu	Nanganga	Vunda	Lautoka
Navatusila . . .	Navatusila			Naivuthini	Nandarava- kawalu	Tholo East
				Nuku	Nandarava- kawalu	Tholo East
				Naitauvoli	Nandarava- kawalu	Tholo East
				Numbutautau	Nandrau	Tholo North
Navatuvoka . . .	Navatuvoka			Nambalambala	Tokaimalo	Ra
Navasia	Natuvu			Navuniivi	Navitilevu	Ra
Navautamba . .	Navautamba			Nakorowaiwai	Mbureivanua	Ra
Navauvau	Navauvau			Korovou	Tavua	Tholo North
Navesi	Navesi			Ndraunaleka	Nakuailava	Ra
				Ndausinga	Nakuailava	Ra
Naviritu	Naviritu			Wairuarua	Nangonenitholo	Tholo East
Navisama	Tarisi			Narara	Naroko	Ra
Navitilevu . . .	Navitilevu		Nambaikau	Naitauvoli	Nandarava- kawalu	Tholo East
				Saumakia	Nandarava- kawalu	Tholo East
				Waikalou	Nandarava- kawalu	Tholo East
				Lau	Nambamba	Ra
				Navuniivi	Navitilevu	Ra
				Navuniyaro	Lutu	Tholo East
Navitilevu	Nambaikau			Wainawangga	Nawaindina	Naitasiri
Navokai	Nanggavoka	Tonga Id., Rewa Prov.		Vunisei	Tonga	Rewa

YAVUTU WITH SINGLE YAVUSA (cont.)

Yavusa	Yavutu	Location	Old Village	Present Village	District	Province
Navolau	Nanggumu			Navolau	Navolau	Ra
Navovula	Nandungutha	Nanggarawai, Namosi Prov.	Naseuvou, Soloira	Vunisinu	Ndreketi	Rewa
Navuakethe	Navuakethe			Navutu	Navuakethe	Naitasiri
Navuanisang- giwa	Nalesia			Lamba	Nakuailava	Ra
Navuavua	Navuavua	Rakiraki, Ra		Navuavua	Rakiraki	Ra
Navundrau	Navundrau			Namuaimanda	Naroko	Ra
Navungayango	Navungayango			Mau-u	Veivatuloa	Namosi
Navunindrala	Navunindrala			Nauluvatu	Nawaindina	Naitasiri
Navuniseya	Navuniseya			Ndelakando	Ndawasamu	Tailevu
				Nataleira	Ndawasamu	Tailevu
				Silana	Ndawasamu	Tailevu
Navunitivi	Navunitivi	Muaira		Lutu	Muaira	Tholo East
Navuniuto	Navuniuto			Nambulini	Nailenga	Tholo East
Navusaka	Navusaka	Nasau "Dist.," Tholo North Prov.		Vanuakula	Nandrau	Tholo North
				Nauria	Nandrau	Tholo North
Navutosara	Navutosara			Nasonggo	Nambumbutho	Tholo North
Navuthu	Nakorovatu			Waimbalavu	Nangonenitholo	Tholo East
Navuta	Talandrau			Nandrau	Nandrau	Tholo North
				Nambuyalevu	Nandrau	Tholo North
				Nambuwangga	Nandrau	Tholo North
				Nggalinasavu	Nandrau	Tholo North
Navutu	Navutu			Veindavutu	Mataso	Ra
				Nambau	Mataso	Ra
Nawaindina	Nawaindina			Korondalawe	Nakuailava	Ra
Nawainovo	Ndelainovo		Verata to Ndelainovo	Matameivere	Namara	Tailevu
Nawakura	Nawakura	near Raralevu, Namata Dist., Tailevu Prov.	Sawandrara	Maumi	Ndravo	Tailevu
Nawandamu	Nawandamu		Nandioka	Navunindakua	Waima	Tholo East
			(the same)	Waisa	Waima	Tholo East
Nawangga	Nawangga			Nausori	Nalawa	Ra
Nawanggai- vende	Nawanggai- vende			Nandakuni	Nawaindina	Naitasiri

YAVUTU WITH SINGLE YAVUSA (cont.)

Yavusa	Yavutu	Location	Old Village	Present Village	District	Province
Nawanggesara .	Rokoroko	Waithomba Dist., Nandron- ga Prov.		Nawanggan - damu	Rukuruku	Nandi
Nawarai	Nawarai			Vuisinga	Waima	Tholo East
Nawayanga . . .	Nangandi			Navitilevu	Nambamba	Ra
Nayavumata . .	Nawaua			Nathokaika	Naitasiri	Naitasiri
Niwau	Niwau			Ndelaiyandua	Mbureiwai	Ra
Noi Koro	Noikoro			Korolevu	Noikoro	Tholo West
				Vunatoto	Noikoro	Tholo West
Noi Korolevu . .	Korolevuiwai	Navosa	Ndeumba, Naitata	Serua	Serua	Serua
Noimalo	Noimalo	Noimalo		Narokoroko- yawa	Noimalo	Tholo East
				Nasauvakarua	Noimalo	Tholo East
Noi Marou . . .	Marou			Mbatiri	Malomalo	Nandronga
Noi Mboro . . .	Ndranikamba	Nasesevia		Vunamoli	Rukuruku	Nandi
Noi Natualeka .	Natualeka			Vunamoli	Rukuruku	Nandi
Noi Takuthi . .	Navulai	Navo	Navo	Vunayasi	Nandi	Nandi
Noi Vatuma . .	Nggelelevu			Nawanggan- damu	Rukuruku	Nandi
				Vatutu	Rukuruku	Nandi
Noi Yaro	Yaro			Vunayasi	Nandi	Nandi
Nokonoko	Nandiritale			Namata	Namata	Tailevu
Notho	Notho	Verata, Tailevu Prov.	Mburekonotho	Nambundrau	Notho	Rewa
Nuku	Nuku, Naselai	Naselai, Nuku Dist.		Natongandravu	Nuku	Tailevu
Nukunitambua .	Nasaunokonoko	Nanggarawai, Namosi Prov.	Totonakavu, Koromuri- muri, Lokia, Rewa Prov.	Lomanikoro	Rewa	Rewa
Numbu	Namoriti	near Nandrau Village, Nan- drau Dist., Tholo North Prov. ³³		Nggalinasavu	Savatu	Tholo North
				Nangatangata	Savatu	Tholo North
				Koro	Savatu	Tholo North
				Waikumbu- kumbu	Savatu	Tholo North
				Vatuthere	Savatu	Tholo North
Numbu				Yavulo	Nasingatoka	Nandronga
Numbutolu . . .	Numbutolu			Nandakuni	Nawaindina	Naitasiri
Ndakuinamba- ramai	Ndakuinamba- ramai			Nandakuni	Nawaindina	Naitasiri

³³See sites 6, 9.

YAVUTU WITH SINGLE YAVUSA (cont.)

Yavusa	Yavutu	Location	Old Village	Present Village	District	Province
Ndakunda	Ndakunda			Lau	Nambamba	Ra
Ndakunimbure .	Ndelaimbukelevu			Waivaka	Namosi	Namosi
Ndanundanu. . .	Waivou	Sawakasa, Tailevu Prov.	Namata, Tailevu Prov., to Vunisoni	Nambundrau	Notho	Rewa
			(the same)	Waivou	Mburembasanga	Rewa
Ndanuwa.	Ndanuwa			Nambulini	Nailenga	Tholo East
Ndaviko	Ndaviko	Nayavu, Tailevu Prov.	Lutu, Tholo East Prov. to Naitasiri	Nanggarani	Notho	Rewa
Ndavutukia . . .	Ndavutukia	Koroinasau		Thambe	Koroinasau	Tholo West
				Saru	Koroinasau	Tholo West
				Tonuve	Mbemana	Tholo West
				Volinangerua	Mbemana	Tholo West
				Votua	Korolevuiwai	Tholo West
				Tangangge	Korolevuiwai	Tholo West
				Namanda	Korolevuiwai	Tholo West
Ndawasamu. . .	Ndawasamu	Tholo East		Nakorovatu	Waima	Tholo East
			Ndawasamu	Ndriti	Ndawasamu	Tailevu
Ndelai	Ndelai	Wainimbuka R.		Ndelakando	Ndawasamu	Tailevu
				Mokani	Ndravo	Tailevu
				Nataveyaira	Viria	Naitasiri
Ndewala	Ndewala			Waituruturu	Mataso	Ra
				Nakorovou	Mataso	Ra
Ndingilo	Ndingilo			Vunayasi	Nandi	Nandi
Ndonumaim- bulu	Ndonumaim- bulu			Rokovuaka	Nambamba	Ra
Ndrano	Ndrano			Wainiyavu	Veinungga	Namosi
Ndranu	Ndranu			Mbureloa	Nakuailava	Ra
Ndravuni	Ndravuni			Visama	Nakelo	Tailevu
Ndrekeniwai . .	Ndrekeniwai			Nakorosule	Nangonenitholo	Tholo East
				Waimbalavu	Nangonenitholo	Tholo East
Ndreketi	Ndreketi			Navuniyasi	Matailombau	Tholo East
Ndrukuya	Ndrukuya			Numbukaluka	Nawaindina	Naitasiri
Nggalimbure . .	Yasa	Verata	Naloto	Naloto	Verata	Tailevu
Nggangga	Nggangga			Namuriwai	Navitilevu	Ra

YAVUTU WITH SINGLE YAVUSA (cont.)

Yavusa	Yavutu	Location	Old Village	Present Village	District	Province
Nggilanggila . . .	Nggilanggila	Raviravi Dist.		Vunitongoloa	Raviravi	Ra
Ovalau	Ovalau		Uluitinairai- langi	Nanggali	Viria	Naitasiri
			(the same)	Vanuakula	Nawaindina	Naitasiri
Rara	Namaranivuka- vuka	Naloto		Naveithovatu	Naloto	Tailevu
Rara	Mbalauma			Vuisinga	Waima	Tholo East
Rewaisavu	Navotua			Matainananu	Mbureiwai	Ra
Rokisi	Nambohiwa			Nambohiwa	Mburetu	Tailevu
Rukuruku	Rukuruku	Navuakethe Dist., Naitasiri Prov.	Navesi to Taunaimbosa	Longani	Namata	Tailevu
Rukuruku	Vunamoli	Vunamoli, Ruku- ruku Dist.		Uto	Rukuruku	Nandi
Sala	Makondranga			Nausori	Nalawa	Ra
Salandina	Nandia			Nakorowaiwai	Mbureivanua	Ra
Salandina	Salandina			Nanggaleng- gangga	Mbureivanua	Ra
Sanasana	Sanasana			Wainilotulevu	Veinungga	Namosi
Sanggele	Sanggele			Vakambuli	Vitongo	Lautoka
Sangunu	Sangunu			Nailanga	Nailanga	Mba
Sarava	Nanggonggosa			Yavuni	Vaturu	Nandi
Saumata	Saumata			Nausori	Nawaka	Nandi
				Namulomulo	Nawaka	Nandi
Sauturanga	Nakoronimbeka			Namara	Lawaki	Ra
Sauvana	Vusama			Moala	Sikituru	Nandi
Savu	Savu			Nambalesere	Nailuva	Ra
Savula	Savula			Nasavu	Rara	Naitasiri
Sawatini	Sawatini			Nananu	Namena	Tailevu
Senimbua	Ne	Sambeto Dist., Nandi Prov.		Nawaka	Nawaka	Nandi
Sese	Sese			Naluwai	Rara	Naitasiri
Sese	Yavulevu			Nawamangi- mangi	Naroko	Ra
Siko	Navunindakua	Navunindakua, Waima Dist., Tholo East Prov.		Vunindumba	Matailombau	Tholo East
				Nairukuruku	Matailombau	Tholo East
				Nakorovatu	Waima	Tholo East
				Navunindakua	Waima	Tholo East

YAVUTU WITH SINGLE YAVUSA (cont.)

Yavusa	Yavutu	Location	Old Village	Present Village	District	Province
Sila	Nanggaya			Nakavu	Nandi	Nandi
Solia	Vuna			Sawani	Vuna	Naitasiri
Soloira	Soloira	Soloira	Nandakuni	Nandakuni	Nawaindina	Naitasiri
			Raravatu	Numbukaluka	Nawaindina	Naitasiri
			(the same)	Natondre	Nawaindina	Naitasiri
			Waikalou	Soloira	Tholo East	
			Navatukia	Soloira	Tholo East	
Suva	Suva			Namuamua	Mbureiwai	Ra
				Ndelaitonga	Matailombau	Tholo East
Tai	Tai			Mbalekinanga	Mbureivanua	Ra
Takalaikiuva . .	Namuaniwangga			Kiuvaira	Mba	Tailevu
Tambaivuna- nggumu	Tambaivuna- nggumu			Nasuvere	Noimalo	Tholo East
				Korovou	Noimalo	Tholo East
Tambanivono . .	Tambanivono, Nanduri	Nokonoko Dist., Nandronga Prov.		Nalele	Malomalo	Nandronga
				Naindiri	Malomalo	Nandronga
Tambanivono . .	Lambasa			Natalethake	Mbulu	Mba
Tambariki	Tambariki			Nasonggo	Veinungga	Namosi
Tathi	Tathi	Nailenga	Mburekonotho	Tathi	Notho	Rewa
Tathini	Navo			Sanasana	Malomalo	Nandronga
Tavarua	Nambitu			Rararua	Rukuruku	Nandi
				Tore	Rukuruku	Nandi
Thakova	Thakova	Rakiraki, Ra		Naila	Ndravo	Tailevu
				Navutulevu	Rakiraki	Ra
Thalia	Thalia	Naitasiri	Nathuru	Nathuru	Notho	Rewa
Thawanisa	Navinoji			Lewa	Savatu	Tholo North
				Nangatangata	Savatu	Tholo North
				Koro	Savatu	Tholo North
Tiolaulau	Nayavuya			Nailanga	Nailanga	Mba
Tokineke	Tokineke			Namara	Nalamba	Ra
Tonga	Tonga			Nawamangi- mangi	Naroko	Ra
Tongavere	Tongavere	Nasau "Dist.," Tholo North Prov.		Numbumakita	Nandrau	Tholo North

YAVUTU WITH SINGLE YAVUSA (cont.)

Yavusa	Yavutu	Location	Old Village	Present Village	District	Province
Tongovereiwai .	Matanasau			Namara	Lawaki	Ra
Toranasau	Viti			Nakini	Naitasiri	Naitasiri
Tumavia	Tumavia			Tumavia	Nakelo	Tailevu
Vakali	Mbau	Mbau Id.	Narukua, Kam- ba, Mbau Dist., Tailevu Prov.	Vakali	Nakelo	Tailevu
			(the same)	Vandrai	Nakelo	Tailevu
Valelawa	Valelawa	Ndreketi Dist., Rewa Prov.	Muailau, Rewa	Levuka	Rewa	Rewa
Valuvuka	Valuvuka			Nasonggo	Veinungga	Namosi
Vanuakula	Vanuakula			Vanuakula	Tavua	Tholo North
Vanuatha	Vanuatha		Tandrawai	Matainasau	Muaira	Tholo East
				Nasingatoka	Namosi	Namosi
Vanuavatu	Vanuavatu			Nasavu	Rara	Naitasiri
Vatu	Vatu			Matawailevu	Nalawa	Ra
Vaturoko	Vaturoko	Vutia, Tholo East Prov.	Naitasiri to Mburemba- sanga, Rewa Prov.	Muanaithake	Vutia	Rewa
Vora	Vora			Korondalawe	Nakuailava	Ra
Vuanindilo	Rukuniwalai	Vungalei Dist., Tailevu Prov.		Nandali	Nausori	Tailevu
Vulangi	Vulangi		Nasilai	Nasilai	Rewa	Rewa
Vunimbua	Koroimbithi			Savatha	Tonga	Rewa
Vuninggele	Vuninggele			Vusinga	Waima	Tholo East
Vuniniumata- rua	Vuniniumata- rua	Thalia, Naita- siri Prov.	Nakuriwai	Nakuriwai	Notho	Rewa
Vunivatu	Vunivatu	Naitasiri	Nanggarani	Nanggarani	Notho	Rewa
Vusarotora	Ndelakurukuru			Nandaro	Vungalei	Tailevu
Vusovuso	Vusovuso		Navunindakua	Navunindakua	Waima	Tholo East
			(the same)	Navuniyasi	Waima	Tholo East
				Navuniyasi	Matailombau	Tholo East
				Navunindakua	Matailombau	Tholo East
Vuto	Vuto		Mburenithangi	Wailevu	Nailenga	Tholo East
Wai	Naveinggali			Rokovuaka	Nambamba	Ra
Wai	Wai	Nasau "Dist.," Tholo North Prov.		Vanuakula	Nandrau	Tholo North
Wailanda	Sakasa			Raranivuli	Nakuailava	Ra

YAVUTU WITH SINGLE YAVUSA (cont.)

Yavusa	Yavutu	Location	Old Village	Present Village	District	Province
				Ndraunaleka	Nakuailava	Ra
Wailevu	Wailevu	Raviravi Dist.		Vatusekiyasawa	Raviravi	Ra
				Vunitongoloa	Raviravi	Ra
				Nawaisomo	Nangonenitholo	Tholo East
Wailumu	Nalase	Mburembasan-	Wailumu	Talu	Ndreketi	Rewa
		ga, Rewa Prov.				
Waimaro	Waimaro			Nakorosule	Nangonenitholo	Tholo East
				Waimbalavu	Nangonenitholo	Tholo East
			Nandanuya	Naluwai	Rara	Naitasiri
			(the same)	Nambaitavo	Nambaitavo	Naitasiri
Wainungga	Wainungga			Nambulini	Nailanga	Tholo East
Wakalou	Nandandara			Nandrauniivi	Raviravi	Ra
Wakaniu	Nakalawatha		Muana, Navuloa	Mburetu	Mburetu	Tailevu
Wambu	Wambu			Tukuraki	Nalotawa	Mba
				Nalotawa	Nalotawa	Mba
Wathakena	Wathakena			Nambangga	Nailuva	Ra
				Naraviravi	Tokaimalo	Ra
				Tavua	Tokaimalo	Ra
Weni	Nenesa			Nayavaira	Navitilevu	Ra
Yakuilau	Yakuilau		Nasau, mouth of Nandi R.	Narewa	Nandi	Nandi
Yalatina	Yalatina			Navala	Nggaliyalatina	Tholo North
				Thuvu	Nggaliyalatina	Tholo North
				Mbatimaoli	Nggaliyalatina	Tholo North
				Tonge	Nggaliyalatina	Tholo North
				Nakomboya	Nggaliyalatina	Tholo North
Yatusawa	Nanduivosavosa	Verata		Uthunivanua	Verata	Tailevu
				Naivuruvuru	Verata	Tailevu
Yaumali	Yaumali			Vatutu	Nawaka	Nandi
Yavusambalavu	Wavuwau			Vita (Votua)	Nailanga	Mba
Yavusavasau	Yavusavasau	Nasaunokonoko, Namosi Prov.	Totonakavu, Koromurimuri, Lokia, Rewa Prov.	Lomanikoro	Rewa	Rewa

SOURCES OF TRIBAL NAMES

Examination of the list of yavusa reveals two sources of tribal names, (1) the yavutu name, of which there are 250, and (2) the name of the old village or first settlement, of which there are 58. Apparently the name of the yavusa ancestor (vu) is not used as the name of the yavusa, even when his name is known. However, only a study of the original records will settle this point. The few names of yavusa ancestors given by Capell and Lester³⁴ indicate that these were not used for the yavusa. The yavusa Nambukembuke, whose ancestor Vere-drau came from the Kouvandra Mountains and settled at Nambukembuke, is a case in point. More than three hundred yavusa names (practically half those recorded) are derived from, or are identical with, place names, whereas none can be attributed to ancestors. This would seem to indicate that the rest are probably likewise derived from place names.

Two hundred and fifty yavusa bear the names of their yavutu. They are distributed among the thirteen provinces as follows: Ra 70, Tholo East 50, Tailevu 35, Naitasiri 31, Rewa 20, Tholo North 17, Namosi 7, Tholo West 6, Nandi 6, Mba 5, Nandronga 2, Lautoka 1, Serua 0. Map 1 shows clearly that this custom is preponderant in the eastern half of the island.

Only fifty-eight yavusa are named for old villages in which they had lived after departure from their yavutu. Of these fifty-eight, forty yavusa claim the Kouvandra Mountains as their yavutu. These forty are distributed among the provinces as follows: Tailevu 30, Nandi 5, Serua 4, Tholo West 1. The distribution of the eighteen non-Kouvandra yavusa is as follows: Tailevu 12, Rewa 3, Lautoka 1, Mba 1, Nandi 1.

Today twenty-one yavusa still live at their yavutu,

or at least in villages which bear the yavutu name. By provinces these twenty-one yavusa are distributed as follows: Tailevu 8, Tholo East 4, Ra 3, Tholo North 3, Naitasiri 1, Tholo West 1, Lautoka 1.

There are a number of yavusa which, though identically named, have different yavutu and are apparently not related. Of course the fact that their yavutu are different is not incontrovertible proof of their separateness. The records of the original Native Lands Commission would need to be consulted to determine this point. It is conceivable that single yavusa may have split, one part retaining the yavutu name, the other assuming a new yavutu name -- although this explanation seems to me unlikely.

Aside from the legendary great movement of yavusa -- or, more probably, of the yavusa ancestors -- from the Kouvandra Mountains, no great migration or population drift can be discerned, although there are plenty of minor ones. Whether these movements antedated the emigration from Kouvandra (assumed to be about 1600) cannot be determined, but I suspect that, on the contrary, most of them took place after the Kouvandra "migration" and were probably induced by wars.

Intermarriage between different yavusa and their constituent clans (matanggali), or between separate villages, is an interesting project for further field work. Capell and Lester give examples that indicate the richness of this field for community studies.³⁵ The genealogies recorded for such investigations would also be useful to the physical anthropologist studying the living population. A quantity of genealogical material has already been accumulated by Dr. Lindsay Verrier in the Departmental Statistics and Demography Branch, Southern District Medical Office, Nausori, Fiji.

³⁴Capell and Lester, pp. 329-331.

³⁵Ibid., pp. 318-323.

LITERATURE CITED

- Brewster, A. B.
1922. The Hill Tribes of Fiji. J. B. Lippincott Company, Philadelphia.
- Capell, A. and R. H. Lester
1941. Local Divisions and Movements in Fiji, *Oceania* 11:313-341; 12:21-48.
- Derrick, R. A.
1946. A History of Fiji, Vol. 1. Printed and published by the Printing and Stationery Department, Suva, Fiji.
- Gifford, E. W.
1949. Excavations in Viti Levu. *Journal of the Polynesian Society*, 58: 83-90.
1951a. Archaeological Excavations in Fiji. *Univ. Calif. Anthro. Rec.*, 13: 189-288.
1951b. Fijian Mythology, Legends, and Archaeology. *Univ. Calif. Publ. Sem. Philol.*, 11: 167-177.
- Spencer, Dorothy M.
1941. Disease, Religion, and Society in the Fiji Islands. *Monographs of the American Ethnological Society*, No. 2.
- Thompson, Laura
1940. Southern Lau, Fiji: An Ethnography. *Bernice P. Bishop Museum Bull.* 162.

PLATES

EXPLANATION OF PLATES

PLATE 30

Mbau Island with mainland of Viti Levu in background.

PLATE 31

- a. Navatu, site 17, viewed from the west.
- b. Legendary house mound of Lutunasombasomba on the acropolis (Korovatu) at Vunda, site 26. Dimensions of mound edge, 35 ft. by 25 ft.; it is oval in outline.

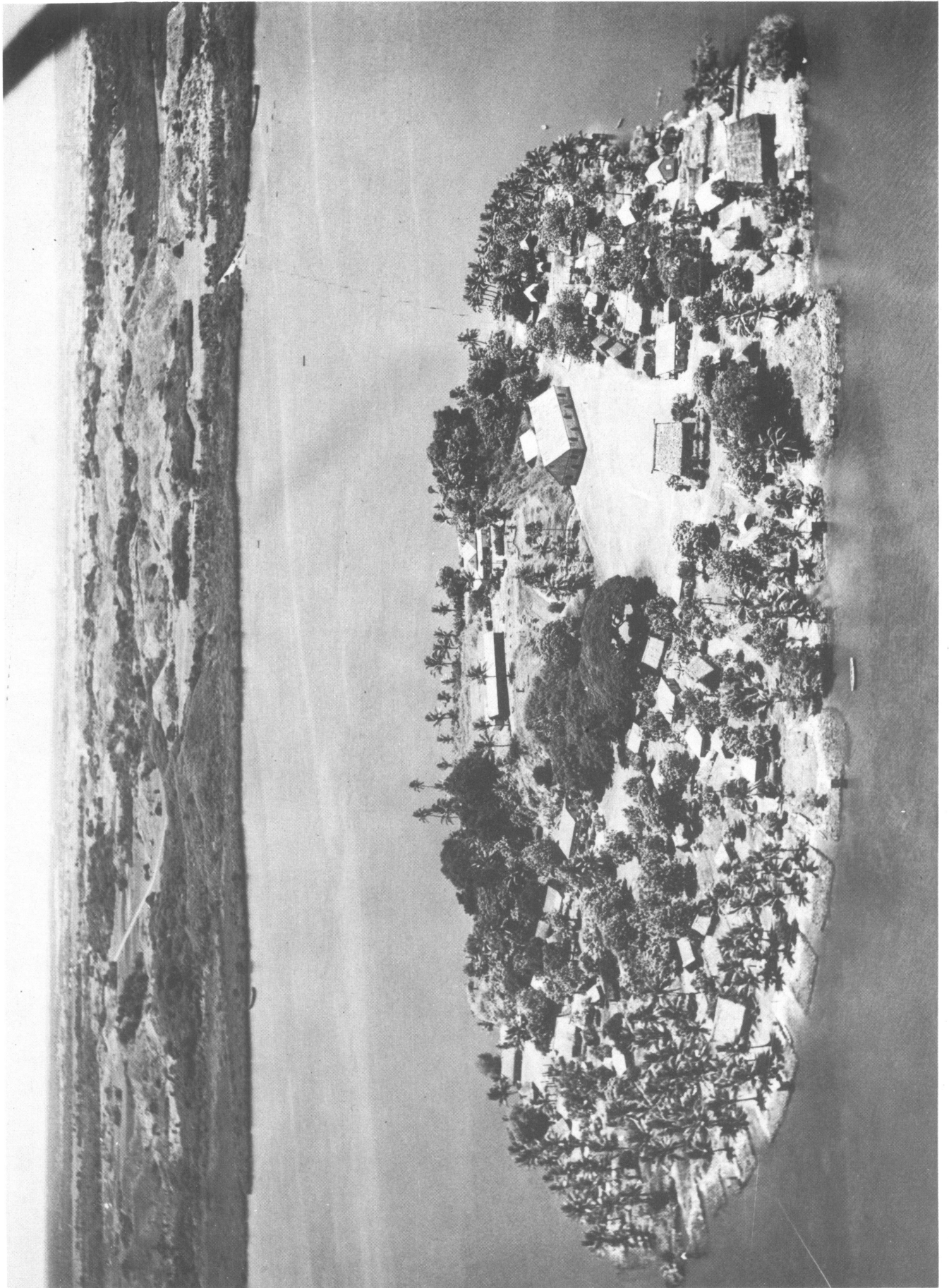


PLATE 30. MBAU ISLAND



a.



b.

PLATE 31. NAVATU, SITE 17; HOUSE MOUND OF LUTUNASOMBASOMBA